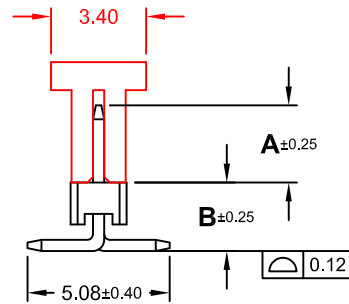
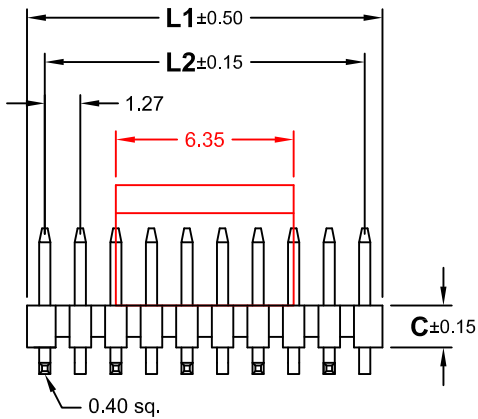


No. of Pins	Dimension (mm)	
	L1	L2
002	2,54	1,27
003	3,81	2,54
004	5,08	3,81
005	6,35	5,08
006	7,62	6,35
007	8,89	7,62
008	10,16	8,89
009	11,43	10,16
010	12,70	11,43
011	13,97	12,70
012	15,24	13,97
013	16,51	15,24
014	17,78	16,51
015	19,05	17,78
016	20,32	19,05
017	21,59	20,32
018	22,86	21,59
019	24,13	22,86
020	25,40	24,13
021	26,67	25,40
022	27,94	26,67
023	29,21	27,94
024	30,48	29,21
025	31,75	30,48
026	33,02	31,75
027	34,29	33,02
028	35,56	34,29
029	36,83	35,56
030	38,10	36,83
031	39,37	38,10
032	40,64	39,37
033	41,91	40,64
034	43,18	41,91
035	44,45	43,18
036	45,72	44,45
037	46,99	45,72
038	48,26	46,99
039	49,53	48,26
040	50,80	49,53
041	52,07	50,80
042	53,34	52,07
043	54,61	53,34
044	55,88	54,61
045	57,15	55,88
046	58,42	57,15
047	59,69	58,42
048	60,96	59,69
049	62,23	60,96
050	63,50	62,23

REV.	DESCRIPTION	DATE	DRAWN
A	New	08.11.2007	Lyndon
U	general update	27.02.2019	Ronny
V	Add Pin Code "071/8 & 171/8"	28.03.2019	Ryan



Order Code
SS1-xxx-HX xxx/x-xx/11X

No. of Pin
002 to 050

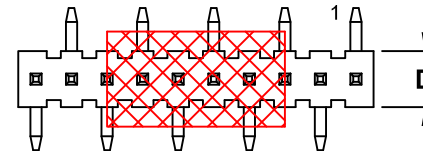
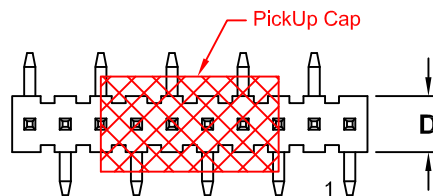
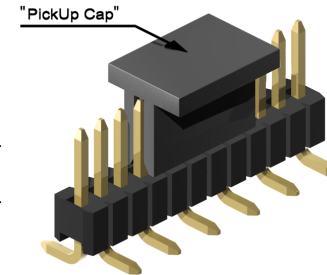
Material
 PA6T = **H**
 PA9T = **HN**

Foot Style/
 Pin code
 See Table
 on sheet 2/2

Option
A = tube with PickUp Cap
B = reel with PickUp Cap

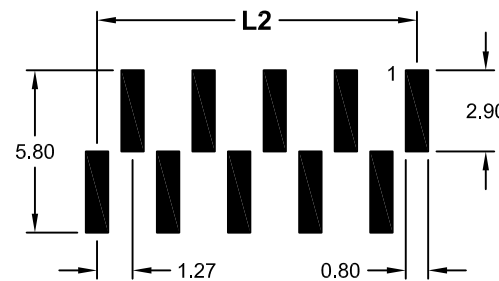
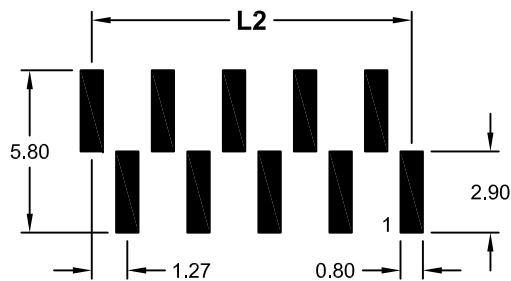
Plating
55 = Gold flash (Standard)
66 = 10µ" Gold
77 = 15µ" Gold
88 = 30µ" Gold
99 = Tin

Duplex plating
95 = Tin/Gold flash
96 = Tin/10µ" Gold
97 = Tin/15µ" Gold
98 = Tin/30µ" Gold



Foot Style 070 & 080 & 095

Foot Style 170 & 180 & 195



Recommended PCB Layout Top View
 (Tolerance ±0.05)

Specifications
Electrical



Current rating: 1A
 Insulation resistance: 1000MΩ min.
 Contact resistance: 20mΩ max.
 Withstanding voltage: 500V AC / Minute

Material

Contact: Brass
 Plating: Gold, Tin or Duplex
 *Duplex = Tin on solder,
 Gold on contact area
 Insulator: PA6T or PA9T (black) UL 94V-0

Operating temperature: -40°C to +105°C
 Processing temperature: +250°C +0/-5°C
 for 10 seconds

E-tec 2019 © - all rights reserved



UNIT	GENERAL TOLERANCE		DRAWN	DATE
mm	X.° ±	X. ±	Lyndon	08.11.2007
SCALE	.X° ±	.X ±	Hogi	28.03.2019
	.XX° ±	.XX ± 0.25	APPROVE	DATE
	.XXX° ±	.XXX ±	Hogi	28.03.2019

DWG. NO.	SHEET
SS1-H/11	1/2
SERIES NO.	REV.
SS1-xxx-HXxx/x-xx/11X	V

Pin Header
1.27mm Pitch -SMT- Straight
 Single Row

Foot Style	Pin code	Dimension mm			
		A	B	C	D
070/ & 170/	0	3.00	1.50	1.00	2.00
	1	10.00			
	2	6.50			
	3	12.50			
	4	4.00			
	5	3.80			
	6	1.65			
	7	4.80			
	8	4.10			
	9	8.00			

Foot Style	Pin code	Dimension mm			
		A	B	C	D
080/ & 180/	0	3.80	2.00	1.50	2.00
	1	4.30	2.10		
	2	4.30	2.40		
	3	3.00	2.00		

Foot Style	Pin code	Dimension mm			
		A	B	C	D
071/ & 171/	0	5.40	2.27	1.00	2.00
	1	10.50	1.50		
	2	3.70	2.80		
	3	3.50	1.50		
	4	1.80	2.00		
	5	15.00	1.70		
	6	4.30	2.10		
	7	3.80	2.10		
	8	3.00	1.70		

Foot Style	Pin code	Dimension mm			
		A	B	C	D
095/ & 195/	0	3.00	3.00	2.50	2.54

E-tec 2019 © - all rights reserved



UNIT	mm
SCALE	Free

GENERAL TOLERANCE	
X.° ±	X. ±
.X° ±	.X ±
.XX° ±	.XX ± 0.25
.XXX° ±	.XXX ±

DRAWN	Lyndon	DATE	08.11.2007
CHECK	Hogi	DATE	28.03.2019
APPROVE	Hogi	DATE	28.03.2019

DWG. NO.	SS1-H/11	SHEET 2/2
SERIES NO.	SS1-xxx-HXxx/x-xx/11X	REV. V

Pin-Code for
Pin Header 1.27mm Pitch
 -SMT- Straight
 Single Row