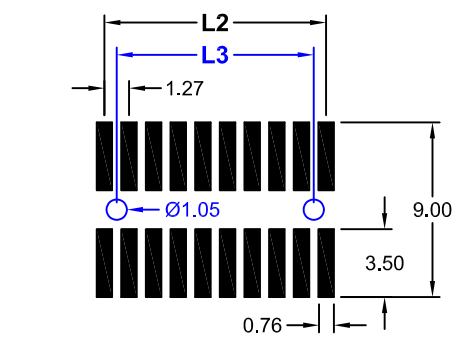
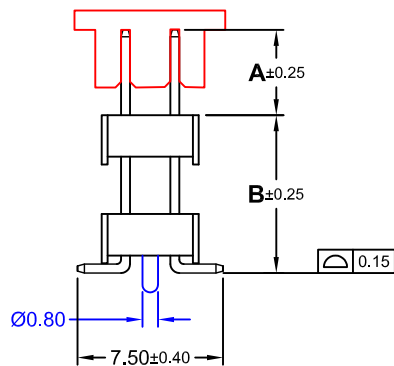
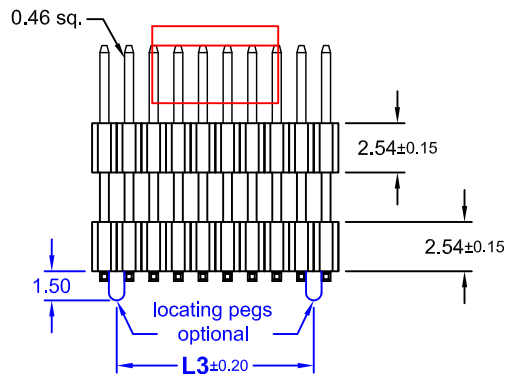
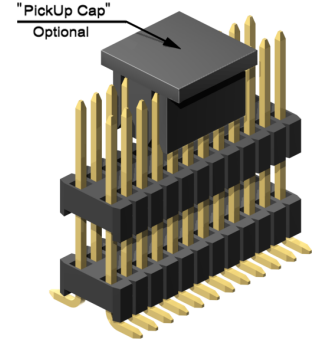
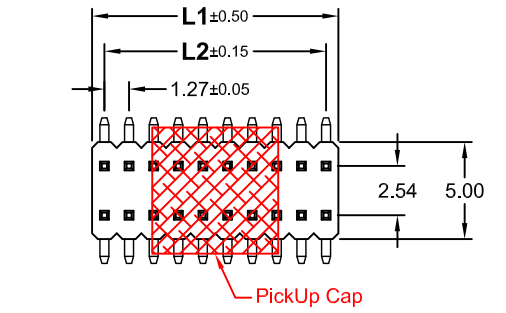


No. of Pins	Dimension (mm)		
	L1	L2	L3
006	3,81	2,54	1,27
008	5,08	3,81	2,54
010	6,35	5,08	3,81
012	7,62	6,35	5,08
014	8,89	7,62	6,35
016	10,16	8,89	7,62
018	11,43	10,16	8,89
020	12,70	11,43	10,16
022	13,97	12,70	11,43
024	15,24	13,97	12,70
026	16,51	15,24	13,97
028	17,78	16,51	15,24
030	19,05	17,78	16,51
032	20,32	19,05	17,78
034	21,59	20,32	19,05
036	22,86	21,59	20,32
038	24,13	22,86	21,59
040	25,40	24,13	22,86
042	26,67	25,40	24,13
044	27,94	26,67	25,40
046	29,21	27,94	26,67
048	30,48	29,21	27,94
050	31,75	30,48	29,21
052	33,02	31,75	30,48
054	34,29	33,02	31,75
056	35,56	34,29	33,02
058	36,83	35,56	34,29
060	38,10	36,83	35,56
062	39,37	38,10	36,83
064	40,64	39,37	38,10
066	41,91	40,64	39,37
068	43,18	41,91	40,64
070	44,45	43,18	41,91
072	45,72	44,45	43,18
074	46,99	45,72	44,45
076	48,26	46,99	45,72
078	49,53	48,26	46,99
080	50,80	49,53	48,26
082	52,07	50,80	49,53
084	53,34	52,07	50,80
086	54,61	53,34	52,07
088	55,88	54,61	53,34
090	57,15	55,88	54,61
092	58,42	57,15	55,88
094	59,69	58,42	57,15
096	60,96	59,69	58,42
098	62,23	60,96	59,69
100	63,50	62,23	60,96



Recommended PCB Layout Top View
(Tolerance ±0.05)

Order Code

SP2-xxx-H220/x-xx/1X

No. of Pin
006 to 100

Dim."A" (mm)	Dim."B" (mm)	Pin Code
5,60	8,50	220/0
5,60	9,75	220/1
3,40	12,00	220/2
3,30	6,50	220/3
4,00	8,00	220/4
6,00	12,00	220/5
5,00	12,00	220/6

Option
without "locating pegs"
A = Tube; with PickUp Cap
B = Reel; with PickUp Cap

with "locating pegs"
C = Tube; without PickUp Cap
D = Tube; with PickUp Cap
E = Reel; with PickUp Cap

Plating
55 = Gold flash (Standard)
66 = 10µ" Gold
77 = 15µ" Gold
88 = 30µ" Gold
99 = Tin

Duplex plating
95 = Tin/Gold flash
96 = Tin/10µ" Gold
97 = Tin/15µ" Gold
98 = Tin/30µ" Gold

Material

Contact: Brass
Plating: Gold, Tin or Duplex
*Duplex = Tin on solder, Gold on contact area
Insulator: PA (black) UL 94V-0

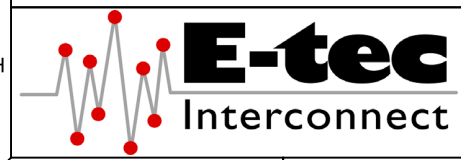
Operating temperature: -40°C to +105°C
Processing temperature: +250°C +0/-5°C for 5 seconds



Specifications

Electrical
Current rating: 1A
Insulation resistance: 1000MΩ min.
Contact resistance: 20mΩ max.
Withstanding voltage: 500V AC / Minute

E-tec 2019 © - all rights reserved



UNIT	GENERAL TOLERANCE		DRAWN	DATE	DWG. NO.	SHEET 1/1
mm	X.° ±	X. ±	Ryan	13.10.2008	SP2-H220	
SCALE	.X° ±	.X ±	Hogi	26.02.2019		REV. E
	.XX° ±	.XX ± 0.25	APPROVE	DATE	SERIES NO.	
	.XXX° ±	.XXX ±	Hogi	26.02.2019	SP2-xxx-H220/x-xx/1X	

Board Spacer Pin Header
-SMT- Straight
Dual Row **1.27mm x 2.54mm Pitch**