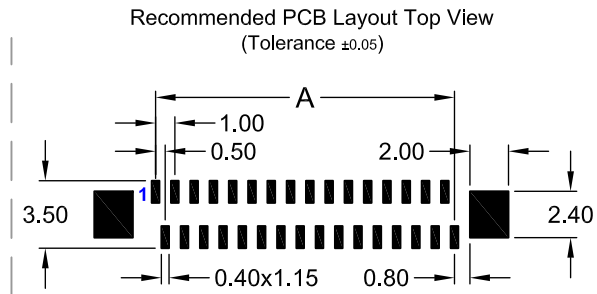
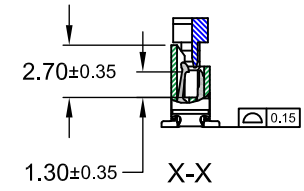
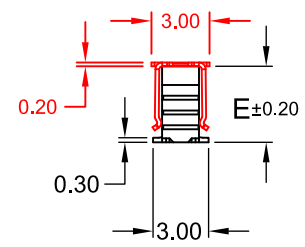
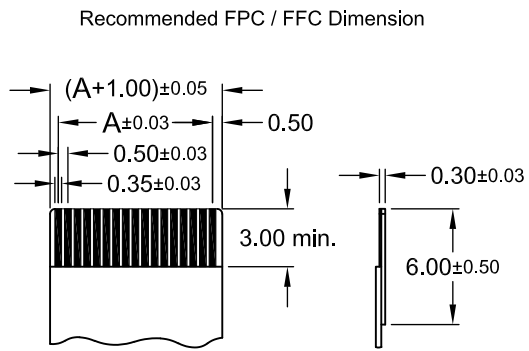
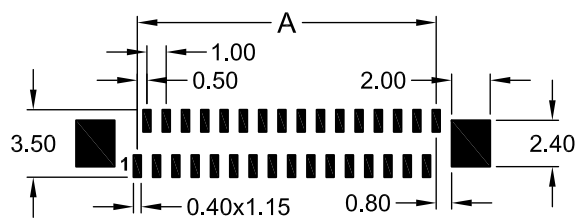
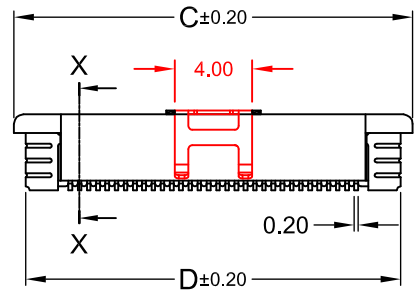
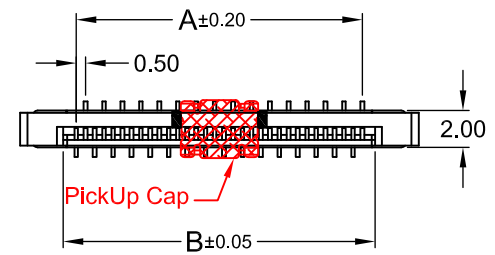
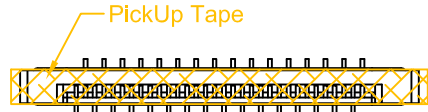


No. of Contacts	Dimension mm			
	A	B	C	D
004	1.50	2.60	7.60	6.50
005	2.00	3.10	8.10	7.00
006	2.50	3.60	8.60	7.50
007	3.00	4.10	9.10	8.00
008	3.50	4.60	9.60	8.50
009	4.00	5.10	10.10	9.00
010	4.50	5.60	10.60	9.50
011	5.00	6.10	11.10	10.00
012	5.50	6.60	11.60	10.50
013	6.00	7.10	12.10	11.00
014	6.50	7.60	12.60	11.50
015	7.00	8.10	13.10	12.00
016	7.50	8.60	13.60	12.50
017	8.00	9.10	14.10	13.00
018	8.50	9.60	14.60	13.50
019	9.00	10.10	15.10	14.00
020	9.50	10.60	15.60	14.50
021	10.00	11.10	16.10	15.00
022	10.50	11.60	16.60	15.50
023	11.00	12.10	17.10	16.00
024	11.50	12.60	17.60	16.50
025	12.00	13.10	18.10	17.00
026	12.50	13.60	18.60	17.50
027	13.00	14.10	19.10	18.00
028	13.50	14.60	19.60	18.50
029	14.00	15.10	20.10	19.00
030	14.50	15.60	20.60	19.50
031	15.00	16.10	21.10	20.00
032	15.50	16.60	21.60	20.50
033	16.00	17.10	22.10	21.00
034	16.50	17.60	22.60	21.50
035	17.00	18.10	23.10	22.00
036	17.50	18.60	23.60	22.50
037	18.00	19.10	24.10	23.00
038	18.50	19.60	24.60	23.50
039	19.00	20.10	25.10	24.00
040	19.50	20.60	25.60	24.50
041	20.00	21.10	26.10	25.00
042	20.50	21.60	26.60	25.50
043	21.00	22.10	27.10	26.00
044	21.50	22.60	27.60	26.50
045	22.00	23.10	28.10	27.00
046	22.50	23.60	28.60	27.50
047	23.00	24.10	29.10	28.00
048	23.50	24.60	29.60	28.50
049	24.00	25.10	30.10	29.00
050	24.50	25.60	30.60	29.50
051	25.00	26.10	31.10	30.00
052	25.50	26.60	31.60	30.50
053	26.00	27.10	32.10	31.00
054	26.50	27.60	32.60	31.50
055	27.00	28.10	33.10	32.00
056	27.50	28.60	33.60	32.50
057	28.00	29.10	34.10	33.00
058	28.50	29.60	34.60	33.50
059	29.00	30.10	35.10	34.00
060	29.50	30.60	35.60	34.50



REV.	DESCRIPTION	DATE	DRAWN
A	New	09.12.2013	Ronny
G	add /R& /RP option	05.06.2020	Cherry
H	correct Contact resistance: 20mΩ-> 40mΩ	22.07.2020	Cherry
I	Add "95" plating option	10.09.2020	Cherry

Order Code
FCZ-xxx-VC5x-xx/ X

No. of contact
004 to 060
see table

Type
standard foot = **VC50**
reverse foot = **VC51**

Plating
Matte-Tin = **99**
Tin/Gold flash = **95**

Reel Packing Option
without PickUp Cap or Tape = /R
with PickUp Cap = /RP
(please ask for availability ≥6 contacts)
with PickUp Tape = /RT
(available)

Specifications

Electrical
Current rating: 0.5A AC/DC
Insulation resistance: 500MΩ min.
Contact resistance: 40mΩ max.
Withstanding voltage: 200V AC/ Minute



Material

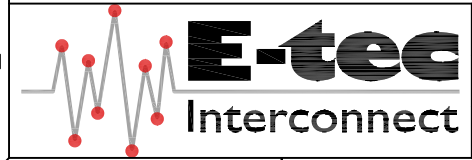
Contact: Phosphor Bronze
Plating: see above plating code
Solder Nail: Brass
Plating: see above plating code
Base: LCP (Nature) UL 94V-0
Actuator: LCP (Black) UL 94V-0

Operating temperature: -40°C to +85°C
Processing temperature: +250°C +0/-5°C for 3 seconds

Packing

Reel: 1.000 pcs./reel

E-tec 2020 © - all rights reserved



UNIT	GENERAL TOLERANCE		DRAWN	DATE	DWG. NO.	SHEET 1/1
mm	X.° ±	X. ±	Ronny	09.12.2013	FCZ-VC5	REV. I
SCALE	.X° ±	.X ±	Ronny	10.09.2020	SERIES NO.	
	.XX° ±	.XX ± 0.20	Fagi	10.09.2020	FCZ-xxx-VC5x-xx/X	
	.XXX° ±	.XXX ±				

FPC / FFC Connector -SMT-
ZIF Type 0.50mm pitch vertical
Series VC50 / VC51
Standard & Reverse foot