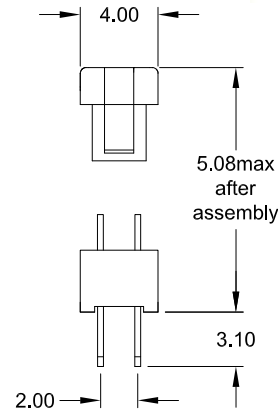
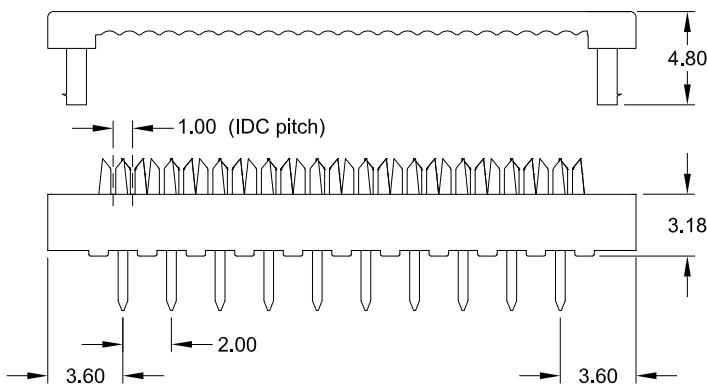
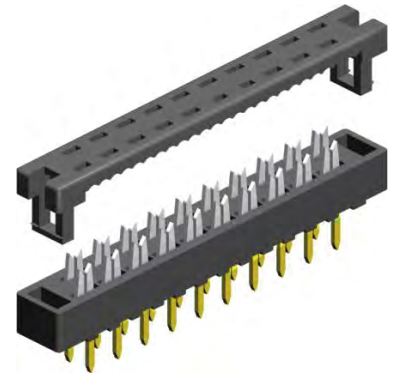


IDC – DIP Plug 2.00mm x 2.00mm

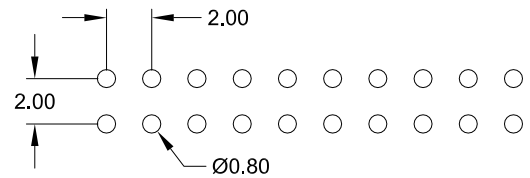
IDC pitch 1.00mm



Application and Features

- A perfect solution for attaching a 1.00mm pitch flat ribbon cable to a PC-board
- Low-profile, only 5.08mm with cable
- Designed for direct soldering to a PC-board or plugging into DIP Socket

PCB Hole Layout



Specifications

Current rating	1 A	Operating temperature	- 40°C to +105°C
Insulation resistance	1000 MΩ min.	Contact material (RoHS compliant)	Phosphor Bronze
Contact resistance	30 mΩ max.	Insulator material (RoHS compliant)	PBT UL 94 V-0
Withstanding voltage	500 V AC		

How to order

IDP - xxx - S200 - N5

Nbr of contacts
006; 008; 010; 012
014; 016; 018; 020
022; 024; 026; 028
030; 034; 040; 044
050; 060; 068

Plating
N5
Ni on IDC area / Au on solder tail