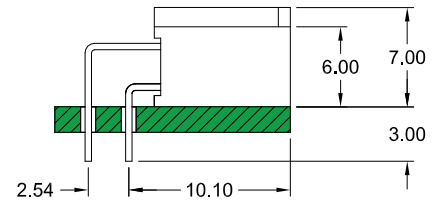
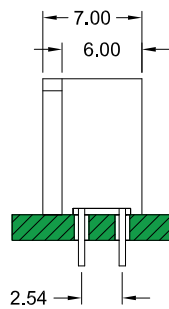
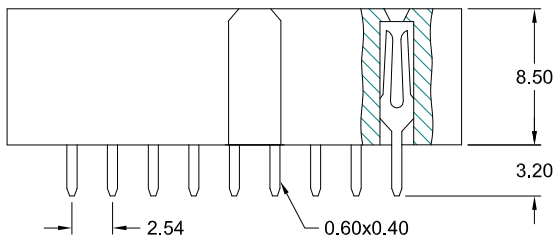
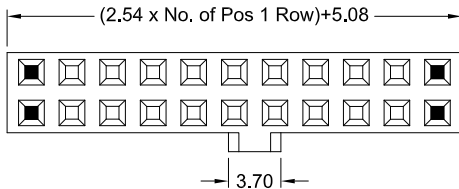
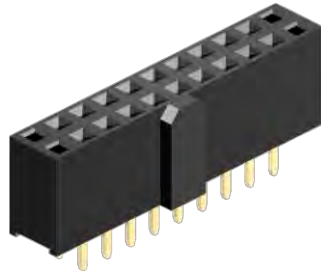


2.54mm pitch Female Header
 - THT - for "Box Header" mating



Application and Features

Mating with Box (Shrouded) Header 2.54mm pitch

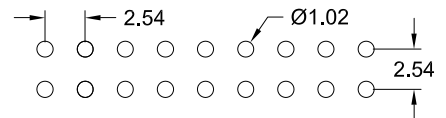
SLS-xxx-S920-xx, SLS-xxx-R920-xx, SLS-xxx-Dxxx-xx & SLS-xxx-H885-xx/X

Standard with polarization bump.

Specifications

Current rating	3 A
Insulation resistance	1000 MΩ min.
Contact resistance	20 mΩ max.
Withstanding voltage	500 V AC
Operating temperature	- 40°C to + 105°C
Contact material	(RoHS compliant) Phosphor Bronze
Insulator Material	(RoHS compliant) PBT UL 94 V-0

PCB Hole Layout



How to order

BW2 - xxx - X 850 - 55/P

Nbr of contacts
006; 008; 010; 014
016; 020; 024; 026
030; 034; 040; 044
048; 050; 060; 064

Connector Style
S = straight
R = right angle

Plating
55 = Gold
other platings on request