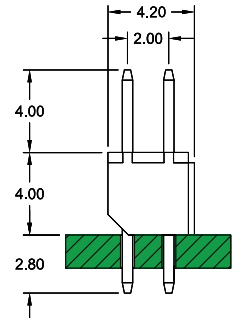
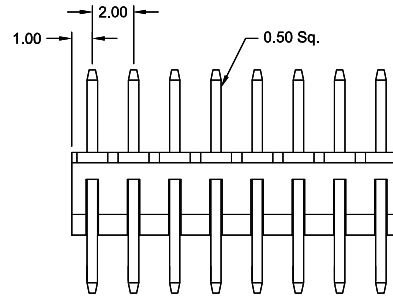
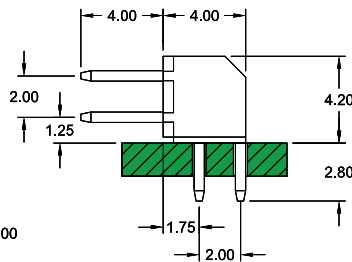
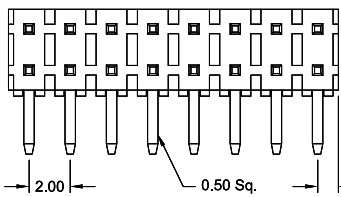
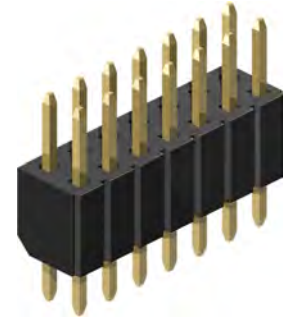
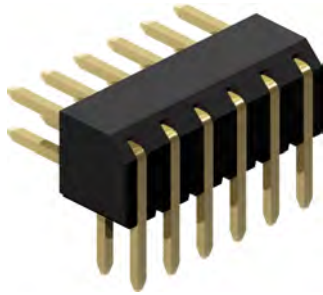


2.00mm pitch Pin Header
 - THT - high plastic base



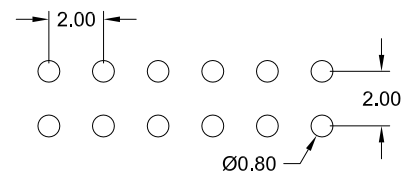
Style **R430**

Style **S400**

Specifications

Current rating	2 A
Insulation resistance	1000 MΩ min.
Withstanding voltage	500 V AC
Operating temperature	- 40°C to +105°C
Contact material	(RoHS compliant) Copper alloy
Insulator material	(RoHS compliant) PA6T UL 94 V-0

PCB Hole Layout



Application and Features

High Base Insulator standoff's facilitate post solder cleaning

Side stackable

Mate with 2.00mm pitch Female and Shunt Connector

How to order

SE2 - xxx - X xxx - xx/2

Nbr of pins

004 to **080**

Pin Style

S400 = straight
R430 = right angle

Plating

55 = Gold
95 = Tin/Gold
(tin leadfree)
 other platings on request