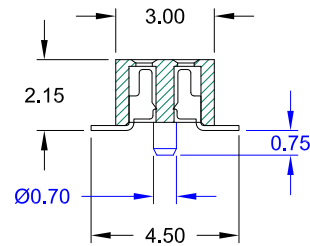
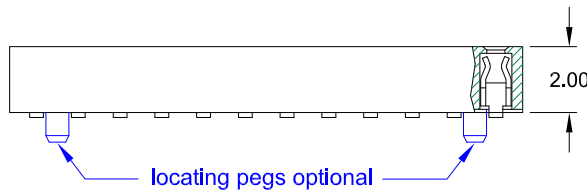
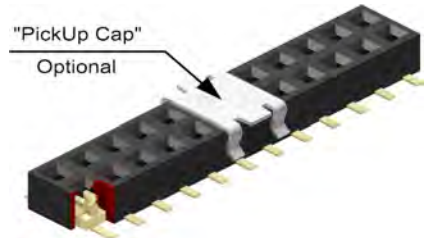
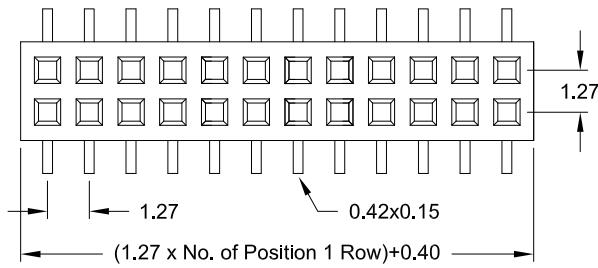


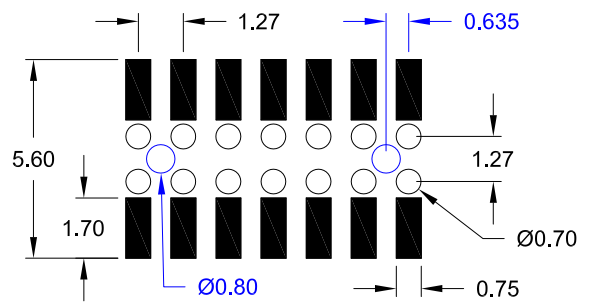
1.27mm pitch Female Header - SMT-  
Top & Bottom Entry 2.20mm profile



**Application and Features**

- **Standard: Tube packing, without locating pegs and without "PickUp Cap"**
- Also available "Reel" packing.
- Low profile, 2.20mm height. Hi-rel dual beam contacts.
- Mating with 1.27mm x 1.27mm pitch 0.40mm square or round Pin Headers.
- Designed for board to board small spacing interconnection.

**PCB Surface Mount & Hole Layout**



**Specifications**

Current rating	1 A
Insulation resistance	1000 MΩ min.
Contact resistance	20 mΩ max.
Withstanding voltage	500 V AC

Operating temperature	- 40°C to +105°C
Processing temperature	+250°C +0/-5°C for 5sec.
Contact material	Phosphor Bronze (RoHS compliant)
Insulator material	LCP UL 94 V-0 (RoHS compliant)

**How to order**

BS2 - xxx - TB22 - 55/11 X

Nbr of contacts
006 to 080

Plating
55 = Gold

Options	
without "locating pegs"	
<b>A</b>	= Tube packing; with „PickUp Cap“
<b>B</b>	= Reel packing; with „PickUp Cap“
with "locating pegs"	
<b>C</b>	= Tube packing; without „PickUp Cap“
<b>D</b>	= Tube packing; with „PickUp Cap“
<b>E</b>	= Reel packing; with „PickUp Cap“

When using this female connector as a bottom entry connector, we recommend that the Pin Header pins protrude by around 2.00mm above the surface of the female connector after assembly. This will avoid any risk of separation of the Pin Header from the Female Header during shock and vibration.