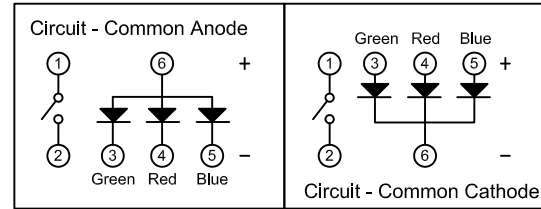
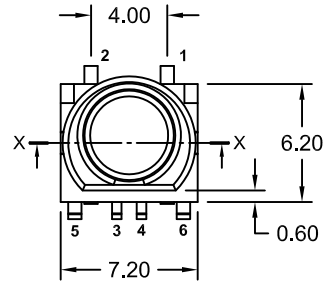


REV.	DESCRIPTION	DATE	DRAWN
A	New	29.11.2018	Ronny
B	general update	10.01.2019	Ronny



**Order Code**  
**TLS-76-S/81Xxx/XXXSX/6SZ**

Cap Color  
(Powder coated)

Black = **B**  
Silver = **S**  
Transparent = **T**

Packing

**C** = Reel  
**T** = Tube  
**M** = Tray (Blister)

LED Color

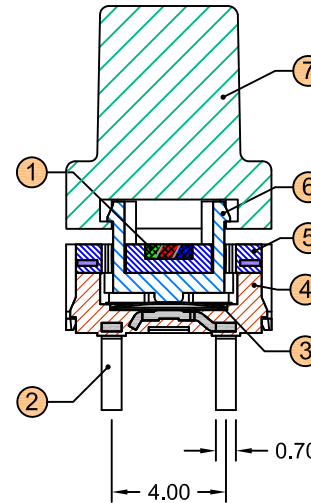
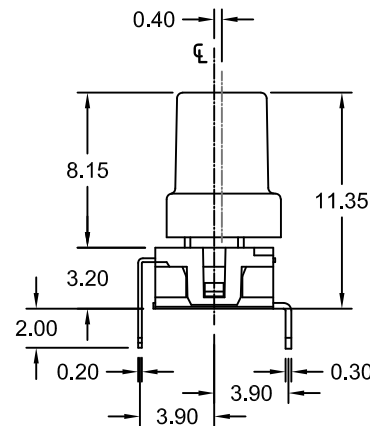
**FA** = full (RGB) Common Anode  
**FC** = full (RGB) Common Cathode

Operating force

**N** = 160g  
**R** = 260g

Cap Mark

1 <sup>st</sup>	2 <sup>nd</sup>	0	1	2	3	4	5	6	7	8	9
0	NO Mark	⏻	⏻	⏻	⏻	⏻	⏻	⏻	⏻	⏻	⏻
1	⏻	⏻	⏻	⏻	⏻	⏻	⏻	⏻	⏻	⏻	⏻
2	START	RESET	Reset	clr CMOS	clr CMOS	Turbo	⏻	⏻	⏻	⏻	⏻
3	⏻	⏻	⏻	⏻	⏻	⏻	⏻	⏻	⏻	⏻	⏻



X-X

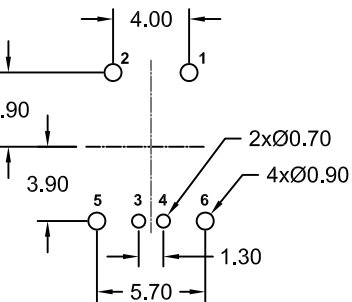
For more technical information, see  
Product Specification **ETEC/A-SW-011**



Item	Desc.	Material	Treatment
1	LED		RGB
2	Terminal	Brass	Silver over Nickel
3	Contact	Steel	Silver over Nickel
4	Base	PA	Black
5	Cover	PA	Black
6	Stem	PA	Black
7	Cap	PC	black
3/4/5	LED Terminal	Phosphor Bronze	Silver over Nickel

SHEET 1/1

**LED Illuminated Tactile Switch**  
**THT straight**  
**with Cap**



Recommended PCB Hole Layout  
(Top View)

E-tec 2019 © - all rights reserved



UNIT	mm	GENERAL TOLERANCE		DRAWN	DATE
SCALE	Free	X.° ±	X. ±	Ronny	29.11.2018
		.X° ±	.X ±	Hogi	10.01.2019
		.XX° ±	.XX ± 0.20	Hogi	10.01.2019
		.XXX° ±	.XXX ±		

DWG. NO.	SHEET 1/1
TLS-76-S/81S/6SZ	REV. B
SERIES NO.	
TLS-76-S/81Xxx/XXXSX/6SZ	