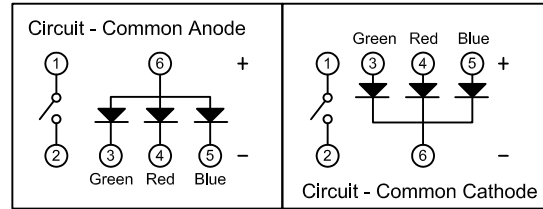
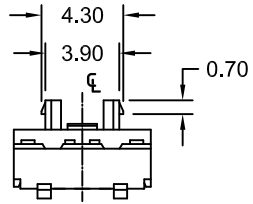


REV.	DESCRIPTION	DATE	DRAWN
A	New	29.11.2018	Ronny
B	correct PCB hole Layout: correct sheet 1/2	10.01.2019	Ronny



Order Code
TLS-76-R/W/X XX S X /6SZ

Packing

C = Reel

T = Tube

M = Tray (Blister)

LED Color

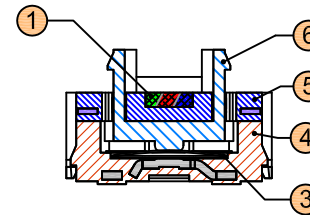
FA = full (RGB) Common Anode

FC = full (RGB) Common Cathode

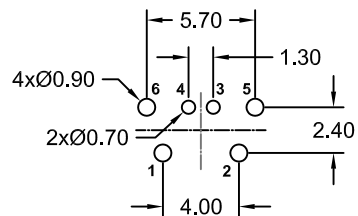
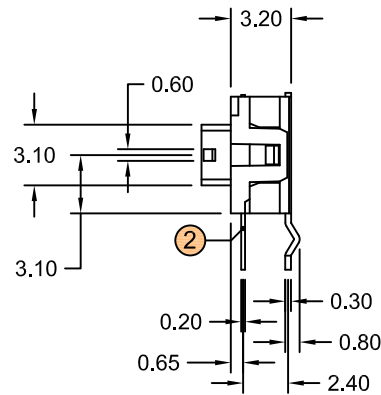
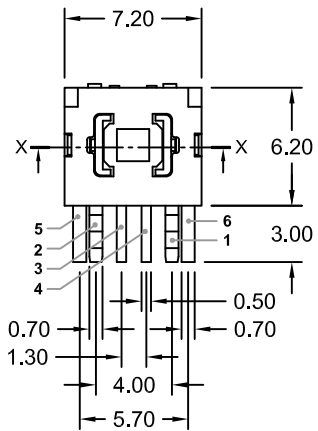
Operating force

N = 160g

R = 260g



X-X



Recommended PCB Hole Layout
(Top View)

For more technical information, see
 Product Specification **ETEC/A-SW-011**



[Cap order information sheet 2/2](#)

Item	Desc.	Material	Treatment
1	LED		RGB
2	Terminal	Brass	Silver over Nickel
3	Contact	Steel	Silver over Nickel
4	Base	PA	Black
5	Cover	PA	Black
6	Stem	PA	Black
3/4/5	LED Terminal	Phosphor Bronze	Silver over Nickel

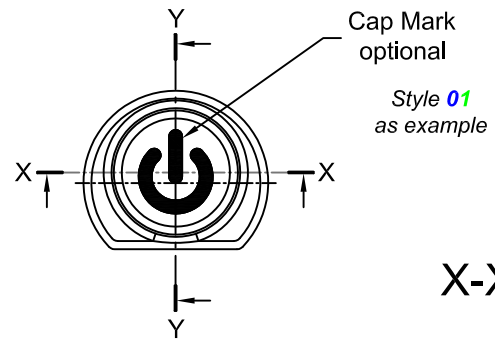
E-tec 2019 © - all rights reserved



UNIT	mm	GENERAL TOLERANCE		DRAWN	DATE	DWG. NO.	SHEET 1/2
SCALE	Free	X.° ±	X. ±	Ronny	29.11.2018	TLS-76-R/W/6SZ	REV. B
		.X° ±	.X ±	Hogi	10.01.2019	SERIES NO.	
		.XX° ±	.XX ± 0.20	Hogi	10.01.2019	TLS-76-R/W/XXXSX/6SZ	
		.XXX° ±	.XXX ±				

LED Illuminated Tactile Switch
 THT right angle
 without Cap

REV.	DESCRIPTION	DATE	DRAWN
A	New	29.11.2018	Ronny
B	general update	10.01.2019	Ronny



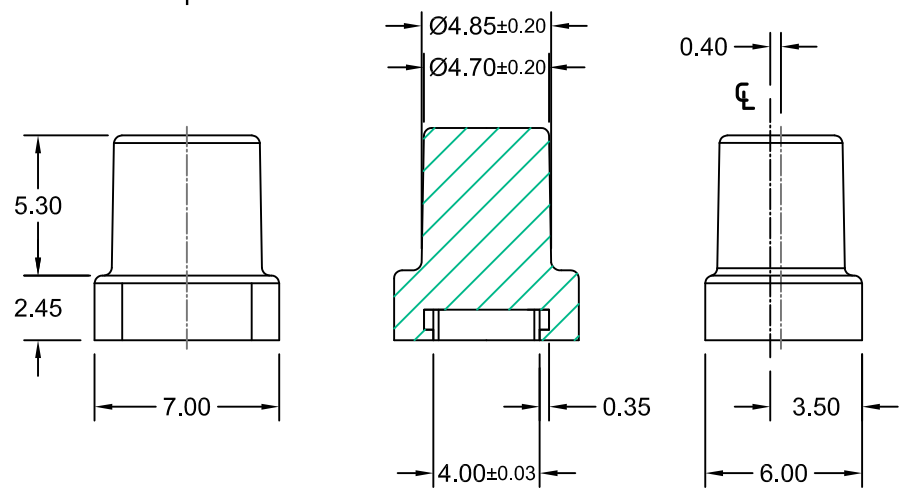
Order Code
TCP-775-81X **xx**

Cap Color
(Powder coated)

Black = **B**
Silver = **S**
Transparent = **T**

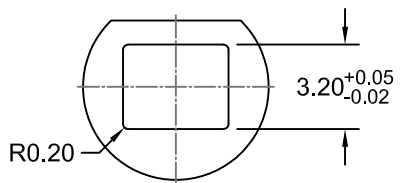
X-X

Y-Y



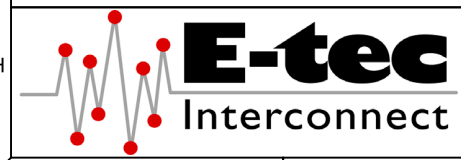
Cap Mark

1 st	2 nd	0	1	2	3	4	5	6	7	8	9
		NO Mark	⏻	⏪	⏩	⏹	ⓘ	⏪	⏩	⏹	ⓘ
		⏻	⏪	⏩	⏹	ⓘ	⏪	⏩	⏹	ⓘ	⏹
		START	RESET	Reset	clr CMOS	clr CMOS	Turbo				
		⏴	⏵	⏶	⏷	+	-	△	●		



Material
PC (Polycarbonate) UL 94V-0

E-tec 2019 © - all rights reserved



UNIT	GENERAL TOLERANCE		DRAWN	DATE	DWG. NO.	SHEET 2/2
mm	X.° ±	X. ±	Ronny	29.11.2018	TCP-775-81	REV. B
SCALE	.X° ±	.X ±	Hogi	10.01.2019	SERIES NO.	
	.XX° ±	.XX ± 0.05	APPROVE	DATE	TCP-775-81Xxx	
	.XXX° ±	.XXX ±	Hogi	10.01.2019		

Cap
for LED Illuminated
Tactile Switches