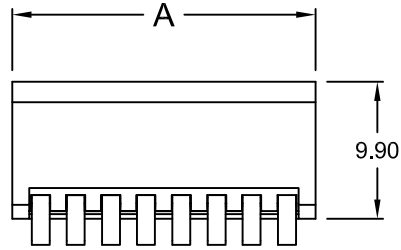
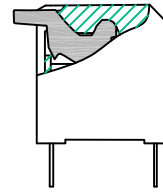
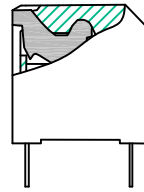


REV.	DESCRIPTION	DATE	DRAWN
A	New	26.12.2017	Ryan
B	general update	16.09.2019	Ronny



low profile Actuator

extended Actuator



Order Code
DPG-1xx - XX/1Zx

DIM "A"	No. of Position
6,64	02
9,18	03
11,72	04
14,26	05
16,80	06
19,34	07
21,88	08
24,42	09
26,96	10
32,04	12

Housing Color

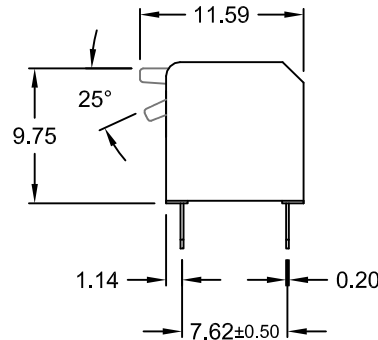
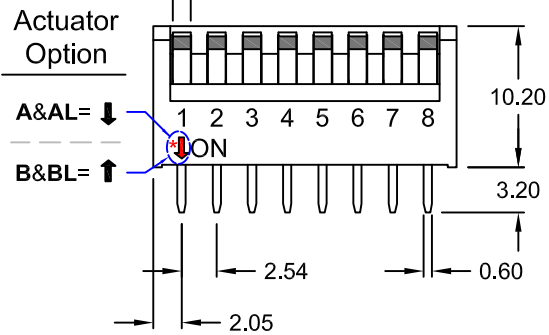
no suffix = red (standard)

0 = black

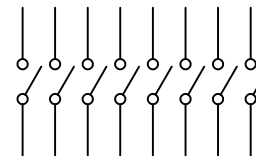
6 = blue

Actuator

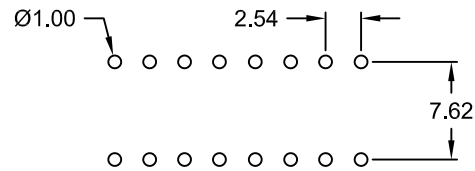
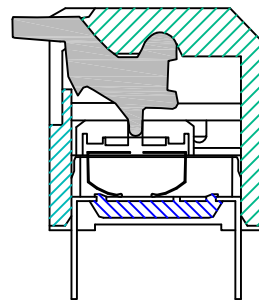
A = Extended Actuator; Top side OFF
AL = Low Profile Actuator; Top side OFF
B = Extended Actuator; Top side ON
BL = Low Profile Actuator; Top side ON



Circuit Diagram



Construction
Contact Form "SPST"



Recommended PCB Hole Layout
(Tolerance ±0.05)

Specifications

Electrical

Current rating:

switching: 25mA @ 24V DC

non-switching: 100mA @ 50V DC

Insulation resistance: 100MΩ min.

Contact resistance: 50mΩ max. (initial)

Withstanding voltage: 500V AC / Minute

Capacitance between adjacent switches 5pF max.

Material

Contact: Copper alloy; Gold plated

Housing: PBT UL 94V-0

Base: PA66 (black) UL 94V-0

Actuator: PBT (white) UL 94V-0

Mechanical Requirements

Operation force: 3.92N max.

Operating life: 2000 cycles/switch min.

Operating temperature: -40°C to +85°C

Storage temperature: -40°C to +85°C

E-tec 2019 © - all rights reserved



UNIT	GENERAL TOLERANCE		DRAWN	DATE	DWG. NO.	SHEET 1/1
mm	X.° ±	X. ±	Ryan	26.12.2017	DPG-1/1Z	REV. B
SCALE	.X° ±	.X ±	CHECK	DATE	SERIES NO.	
Free	.XX° ±	.XX ± 0.20	Ronny	16.09.2019	DPG-1xx-XX/1Zx	
	.XXX° ±	.XXX ±	APPROVE	DATE		
			Fagi	16.09.2019		

DPG Series Piano Switch
Slide Contact Type
"THT" Standard Profile