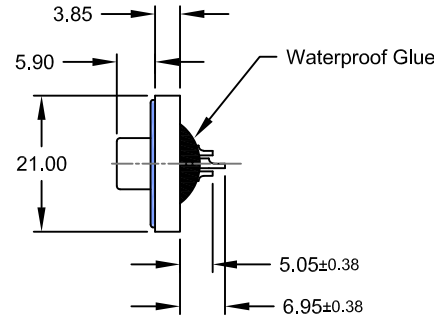
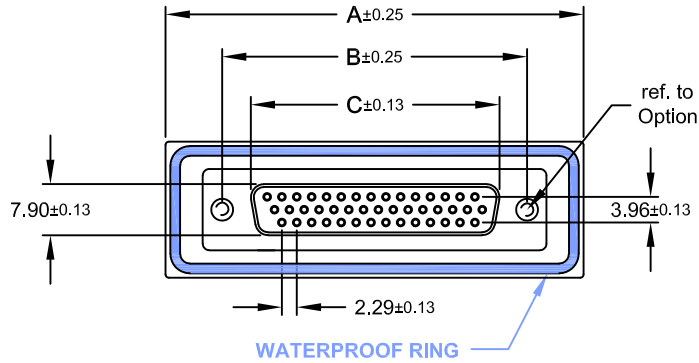
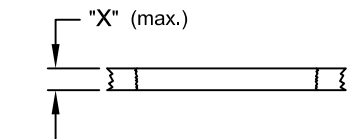
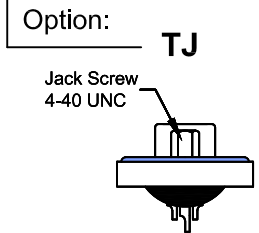
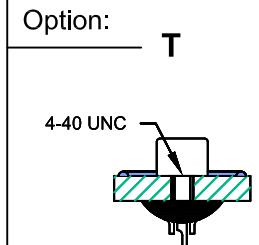
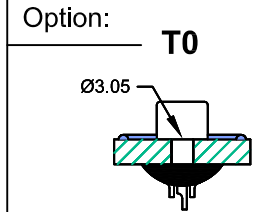
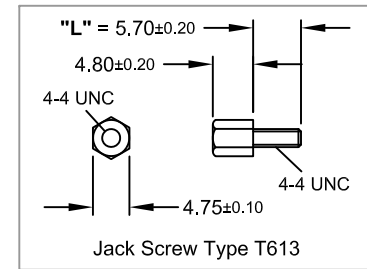
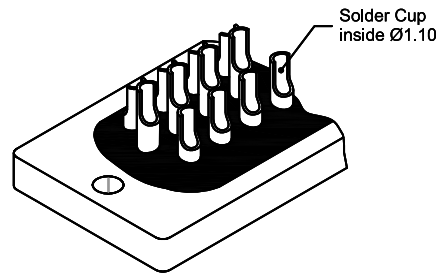
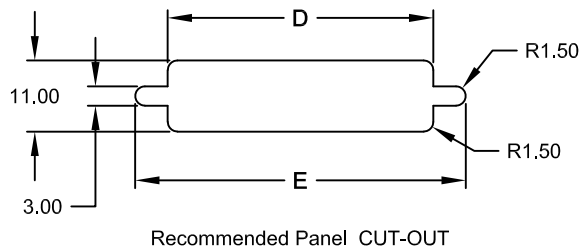
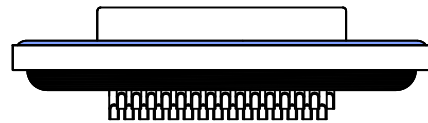


REV.	DESCRIPTION	DATE	DRAWN
A	New	10.11.2006	RH
B	frame	23.07.2008	Ronny
C	correct No. of contact	20.04.2011	Ronny
D	general update	05.08.2019	Ronny



Order Code
SHF-xxx-SIP01-55/TX

Dimension mm					No. of Contact
A	B	C	D	E	
39,40	24,99	16,33	20,00	28,20	015
47,70	33,30	24,66	28,00	36,50	026
64,50	47,04	38,38	41,50	51,00	044



Panel Thickness
Screw "L" = 5.70 for Panel thickness "X" between 1.20~2.00mm

Specifications

Electrical
Current rating: 5A
Insulation resistance: 5000MΩ min.
Contact resistance: 10mΩ max.
Voltage rating: 250V AC rms max.
Withstanding voltage: 1000V AC rms

Material

Contact: Brass
Plating: Au flash over Ni
Insulator: PBT UL 94V-0
Shell: Steel
Plating: Ni
Operating temperature: -55°C to +85°C



Salt Spray: 48 Hours
Waterproof rating: IP 67 min.

E-tec 2019 © - all rights reserved



UNIT	GENERAL TOLERANCE		DRAWN	DATE	DWG. NO.	SHEET 1/1
mm	X.° ±	X. ±	RH	10.11.2006	SHM-SIP01/T	REV. D
SCALE	.X° ±	.X ±	CHECK	05.08.2019	SERIES NO.	
Free	.XX° ±	.XX ± 0.25	APPROVE	05.08.2019	SHM-xxx-SIP01-55/TX	
	.XXX° ±	.XXX ±	Fagi			

Waterproof D-Sub "Female"
High Density
Solder Cup Type