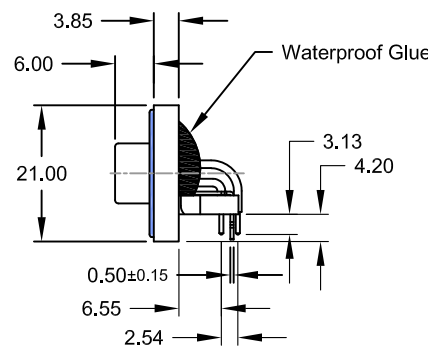
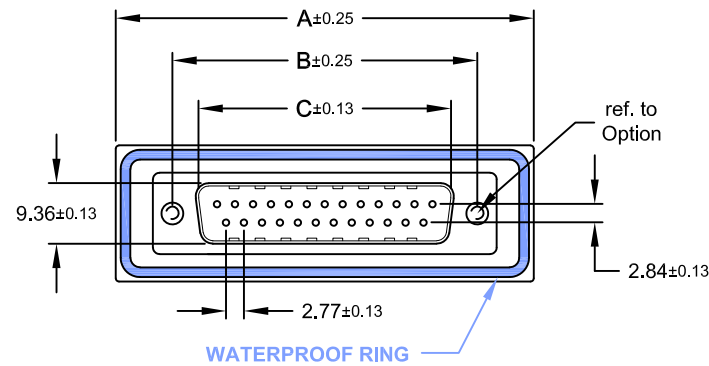
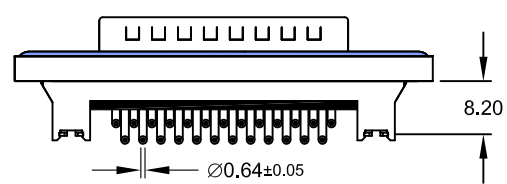


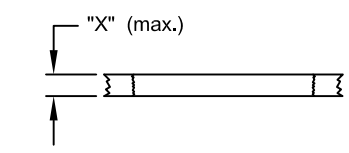
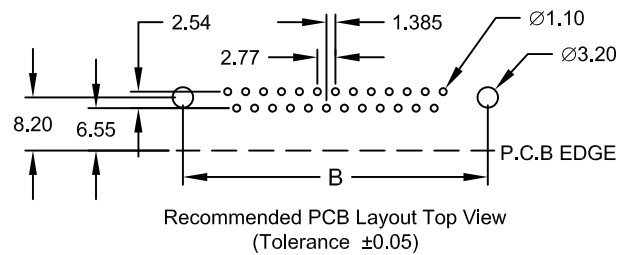
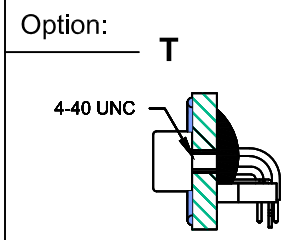
REV.	DESCRIPTION	DATE	DRAWN
A	New	10.11.2006	RH
D	correct layout 2.84->2.54mm	09.05.2017	Ryan
E	general update	27.02.2018	Ronny
F	update	06.08.2019	Ronny



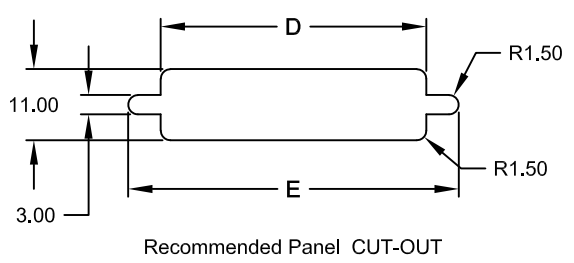
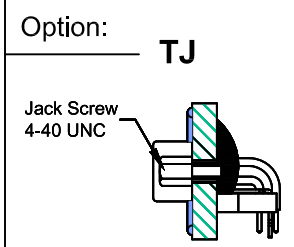
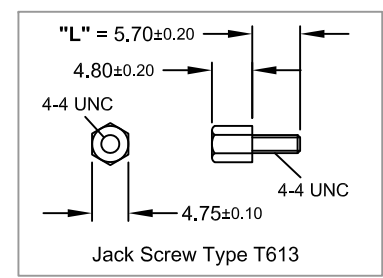
**Order Code**  
SDM-xxx-NIP7-55/B2TXX



Dimension mm					No. of Contact
A	B	C	D	E	
39,40	24,99	16,92	20,00	28,20	009
47,70	33,32	25,25	28,00	36,50	015
64,50	47,04	38,96	41,50	51,00	025



**Panel Thickness**  
Screw "L" = 5.70 for Panel thickness "X" between 1.20~2.00mm

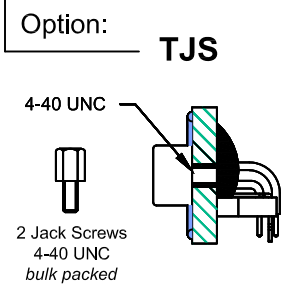


**Specifications**  
**Electrical**  
Current rating: 5A  
Insulation resistance: 5000MΩ min.  
Contact resistance: 10mΩ max.  
Voltage rating: 250V AC rms max.  
Withstanding voltage: 1000V AC rms

**Material**  
Contact: Brass  
Plating: Au flash over Ni  
Insulator: PBT UL 94V-0  
Shell: Steel  
Plating: Ni



Operating temperature: -55°C to +85°C  
Salt Spray: 48 Hours  
Waterproof rating: IP 67 min.



E-tec 2019 © - all rights reserved



UNIT	GENERAL TOLERANCE		DRAWN	DATE
mm	X.° ±	X. ±	RH	10.11.2006
SCALE Free	.X° ±	.X ±	CHECK Ronny	DATE 06.08.2019
	.XX° ±	.XX ± 0.25	APPROVE Fagi	DATE 06.08.2019
	.XXX° ±	.XXX ±		

DWG. NO.	SHEET 1/1
SDM-NIP7/B2T	REV. F
SERIES NO.	
SDM-xxx-NIP7-55/B2TXX	

**Waterproof D-Sub**  
Standard "Male"  
*Right Angle Type with Brackets*