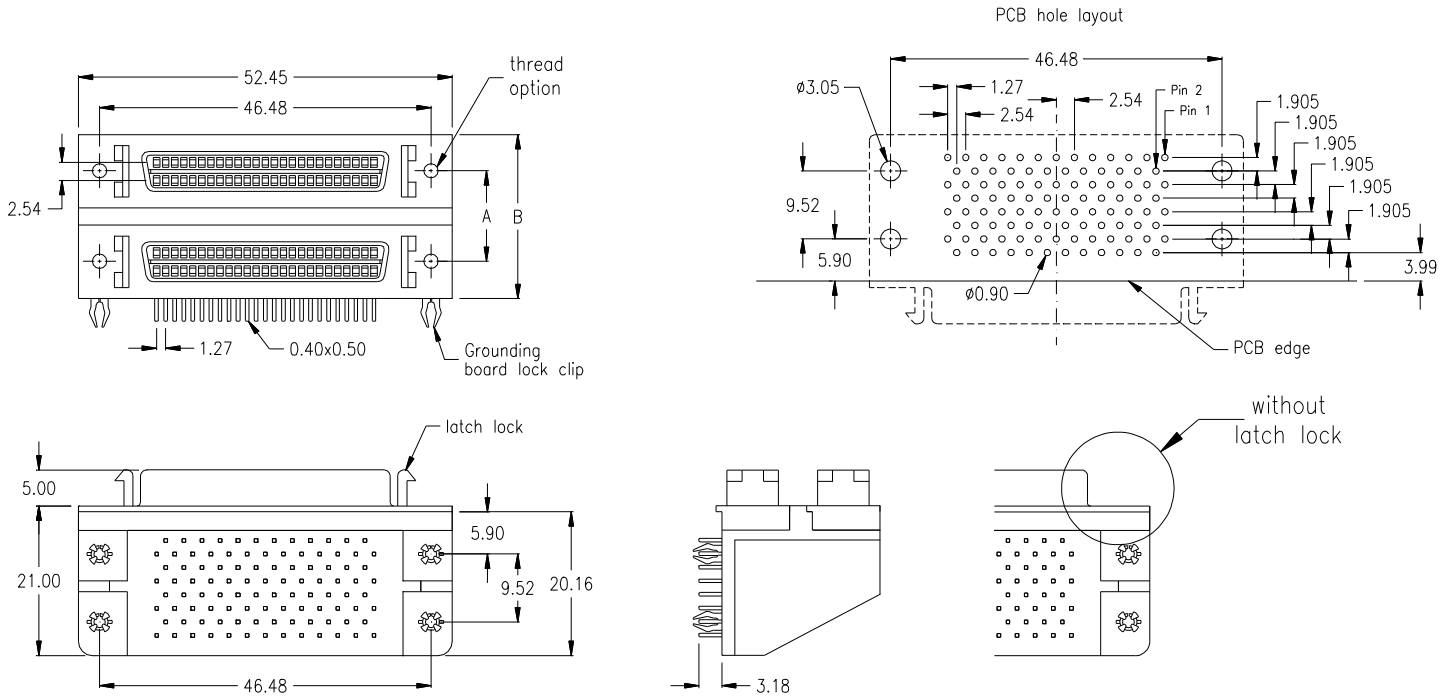
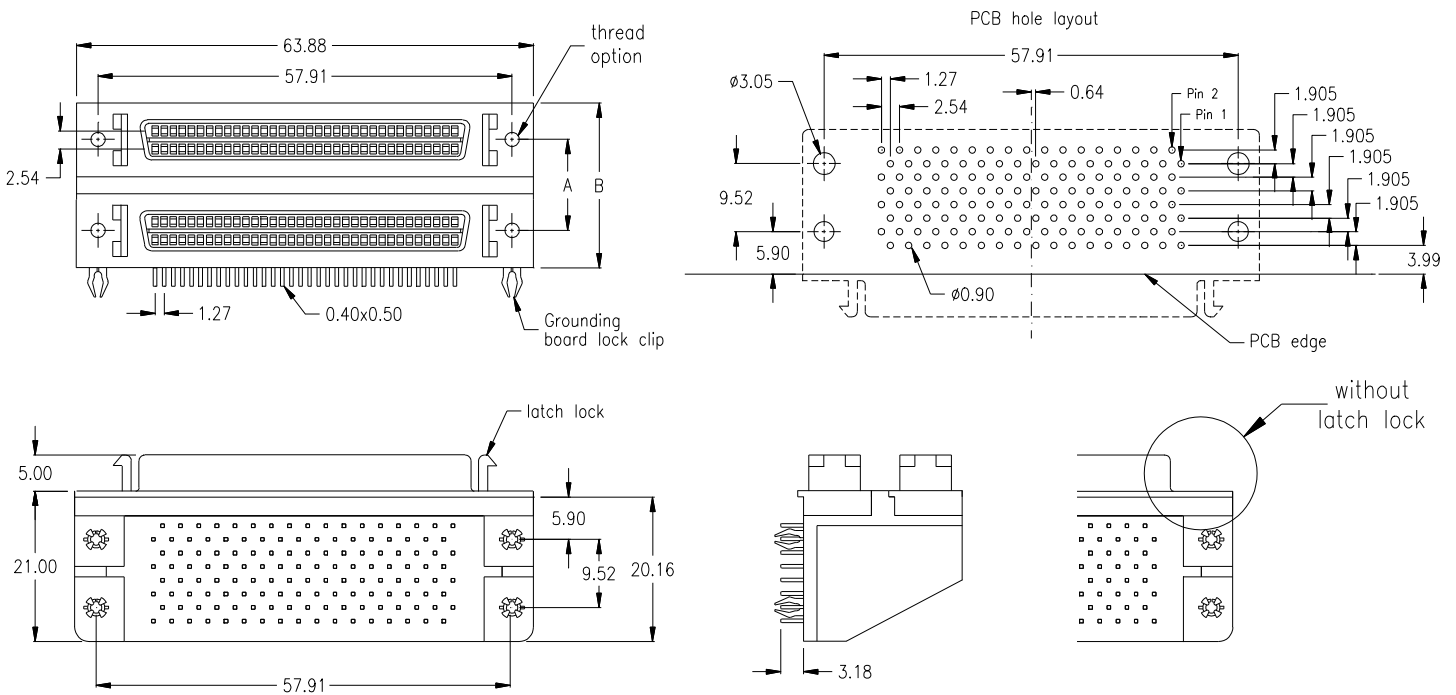


**50-pin female / 50-pin female**



with latch lock, and 4-40 UNC thread option	with latch lock, and 2-56 UNC thread option	without latch lock, and 4-40 UNC thread option	without latch lock, and 2-56 UNC thread option	Distance Dimensions
CSD-5050-6-95-FV2-0	CSD-5050-6-95-FV2-1	CSD-5050-6-95-FV3-0	CSD-5050-6-95-FV3-1	„A“ = 15.24 „B“ = 25.54

**68-pin female / 68-pin female**



with latch lock, and 4-40 UNC thread option	with latch lock, and 2-56 UNC thread option	without latch lock, and 4-40 UNC thread option	without latch lock, and 2-56 UNC thread option	Distance Dimensions
CSD-6868-6-95-FV2-0	CSD-6868-6-95-FV2-1	CSD-6868-6-95-FV3-0	CSD-6868-6-95-FV3-1	„A“ = 15.24 „B“ = 25.54