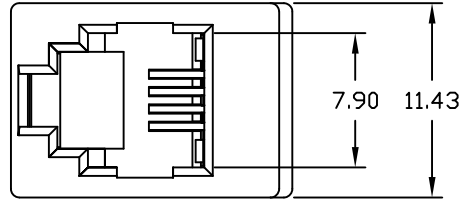
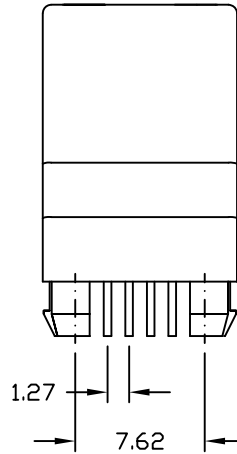
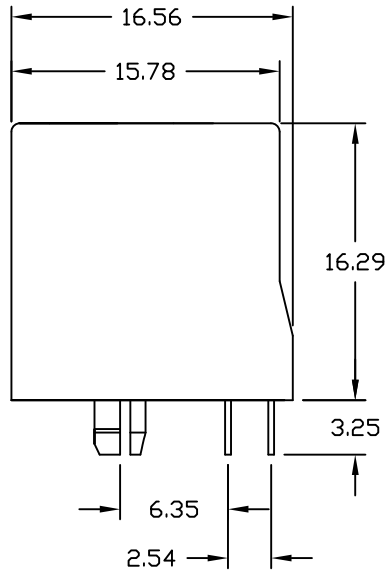
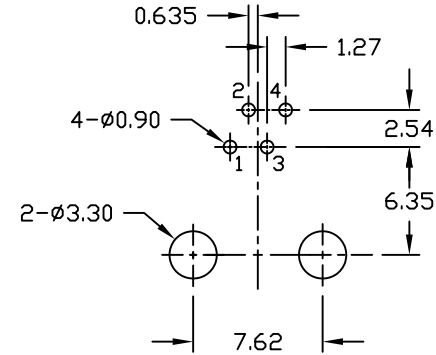


REV.	LOCAS.	DESCRIPTION	DATE	DRAWN
A		New	27.07.1996	Jerry
B		New DWG. No.	01.02.2012	Ronny



RECOMMENDED HOLE PATTERN  
TOP VIEW



SPECIFICATIONS

Current rating:	1.5A
Insulation resistance:	500MΩ min./500V DC
Dielectric withstanding:	1000V rms 60Hz/Minute
Contact resistance:	40mΩ max./20mV DC
Operating temperature:	-40°C ~ +105°C
Insulator material:	P.B.T. UL 94V-0 color: Black
Contact material:	0.35mm PhBz
Plating:	Sn over Ni on solder area, Au over Ni on mating area

PART NUMBER	GOLD PLATING CONTACT AREA
MJT-144-S1S2-96	6μ"

Cavity confirms to FCC Rules and Registration PAR68, Subparts F



UNIT	mm
SCALE	Free

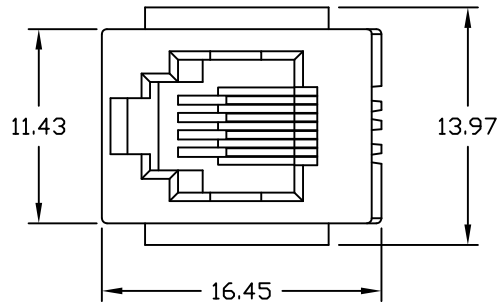
GENERAL TOLERANCE	
X.° ±	X ± 0.50
.X° ±	.X ± 0.38
.XX° ±	.XX ± 0.25
ANG. ± 3°	.XXX ± 0.10

DRAWN	Jerry	DATE	27.07.1996
CHECK	Ronny	DATE	01.02.2012
APPROVE	Hogi	DATE	01.02.2012

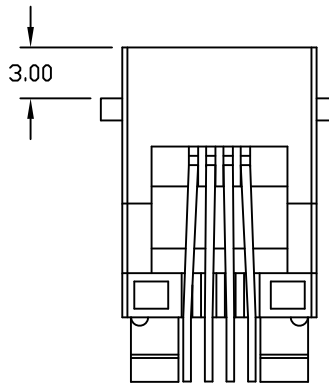
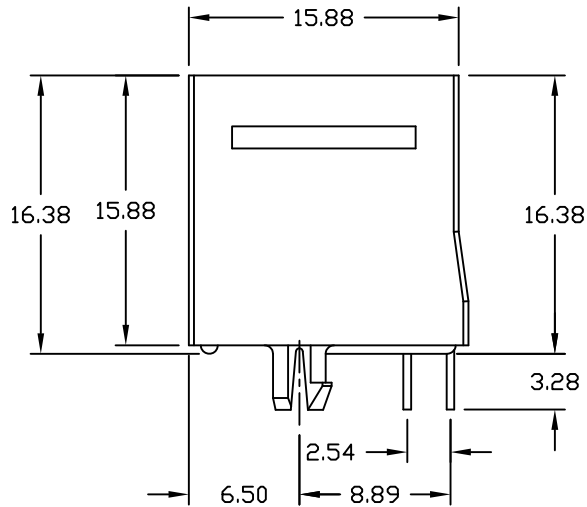
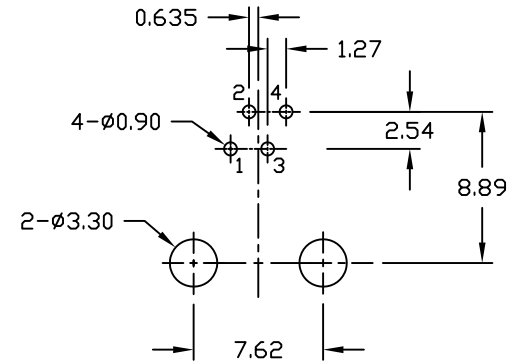
DWG. NO.	1411100	SHEET 1/1
SERIES NO.	MJT-144-S1S2-9x	REV. B

**TOP ENTRY PCB JACK**  
RJ9 <4P4C>  
LOW PROFILE TYPE NON SHIELDED

REV.	LOCAS.	DESCRIPTION	DATE	DRAWN
A		New	27.07.1996	Jerry
B		New DWG. No.	01.02.2012	Ronny



RECOMMENDED HOLE PATTERN  
TOP VIEW



SPECIFICATIONS

Current rating:	1.5A
Insulation resistance:	500MΩ min./500V DC
Dielectric withstanding:	1000V rms 60Hz/Minute
Contact resistance:	40mΩ max./20mV DC
Operating temperature:	-40°C ~ +105°C
Insulator material:	P.B.T. UL 94V-0 color: Black
Contact material:	0.46mm Ø PhBz
Plating:	Sn over Ni on solder area, Au over Ni on mating area

Cavity confirms to FCC Rules and Registration PAR68,  
Subparts F

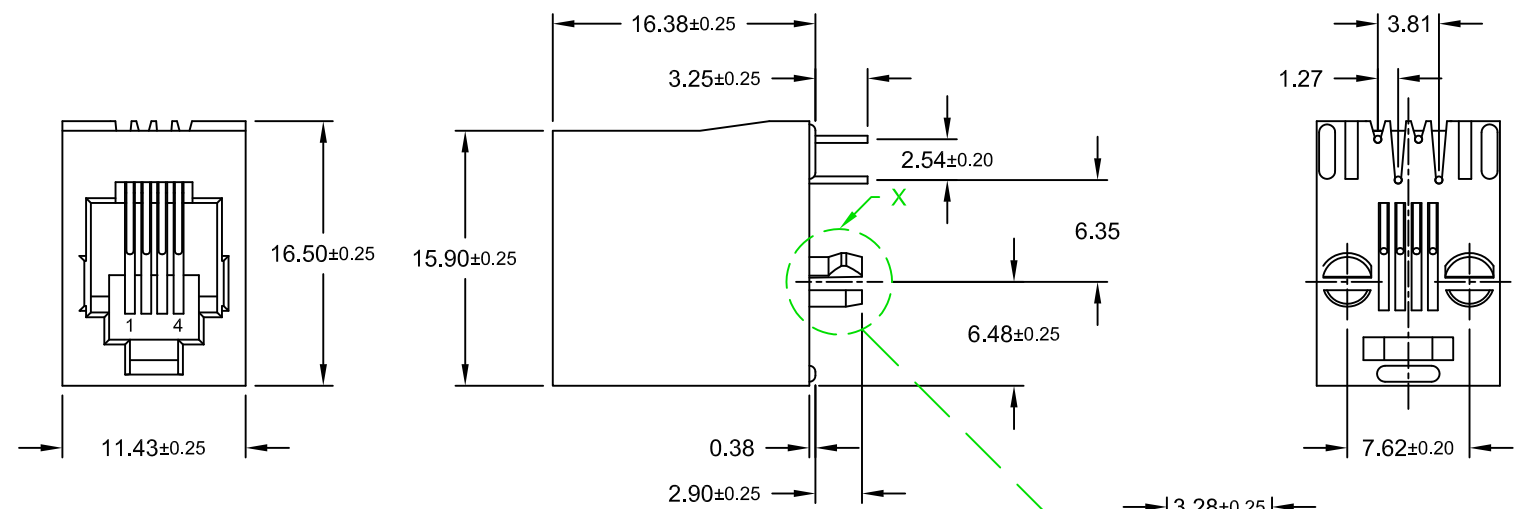
PART NUMBER	GOLD PLATING CONTACT AREA
MJT-144-S1S3-96	6μ"
MJT-144-S1S3-97	15μ"
MJT-144-S1S3-98	30μ"
MJT-144-S1S3-9H	50μ"



UNIT	mm	GENERAL TOLERANCE		DRAWN	DATE	DWG. NO.	SHEET 1/1
SCALE	Free	X.° ±	X ± 0.50	Jerry	11.03.1993	1411101	REV. B
		.X° ±	.X ± 0.38	Ronny	01.02.2012	SERIES NO.	
		.XX° ±	.XX ± 0.25	Hogl	01.02.2012	MJT-144-S1S3-9x	
		ANG. ± 3°	.XXX ± 0.10				

**Top Entry PCB Jack**  
RJ9 <4P4C> NON shielded  
Low Profile Type with Panel Stop

REV.	DESCRIPTION	DATE	DRAWN
A	New	28.10.2016	Cherry



### Specifications

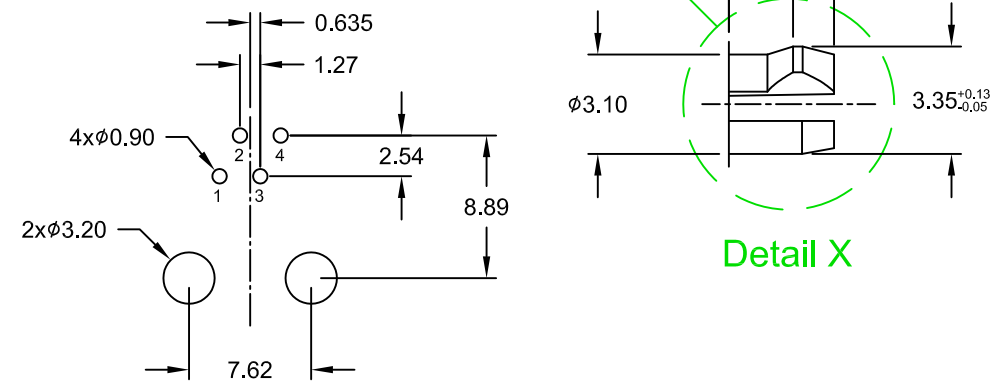
#### Electrical

- Current rating: 1.5A
- Insulation resistance: 500MΩ min.
- Contact resistance: 40mΩ max.
- Withstanding voltage: 1000V AC / Minute

#### Material

- Contact: Phosphor Bronze  $\phi 0.45$ mm
- Plating: Au on solder area;  
Au 6μ" on contact area  
entire contact 50μ" Ni  
underplated
- Insulator: PBT (black) UL 94V-0
- Operating temperature: -40°C to +85°C

Cavity comply with FCC Rules and Regulations Part 68, Subpart F



Recommended PCB Layout  
Top View  
(Tolerance ±0.05)

PART NUMBER	GOLD PLATING CONTACT AREA
MJT-144-S3S0-56	6μ"

E-tec 2016 © - all rights reserved



UNIT mm	GENERAL TOLERANCE		DRAWN Cherry	DATE 28.10.2016	DWG. NO. 1411104	SHEET 1/1				
	SCALE Free	X.° ±					X. ±	CHECK Ronny	DATE 28.10.2016	SERIES NO. MJT-144-S3S0-5x
		.XX° ±					.XX ± 0.13			
		.XXX° ±					.XXX ±			
			APPROVE Hogi	DATE 28.10.2016		REV. A				

**Top Entry PCB Jack**  
RJ9 <4P4C>  
NON shielded