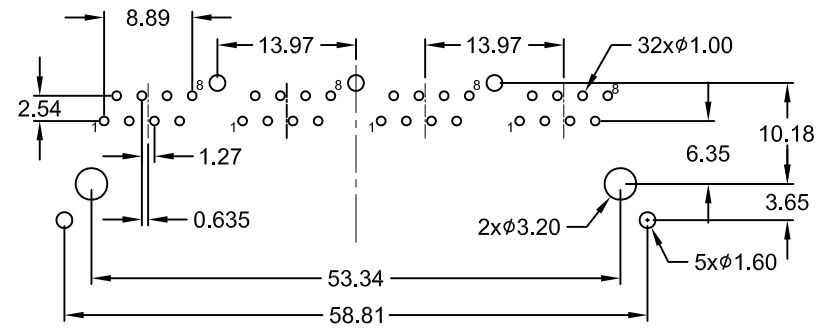
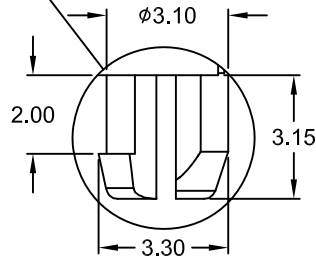
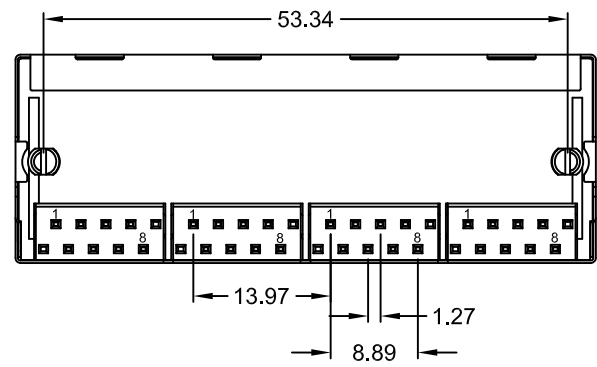
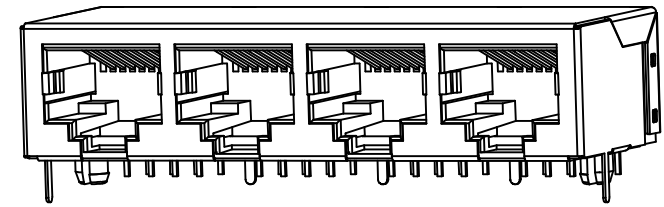
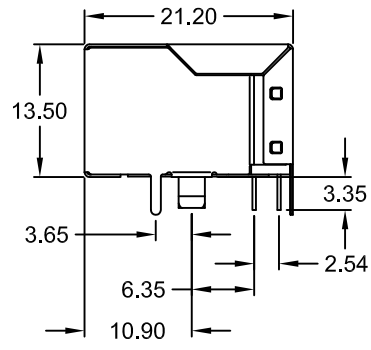
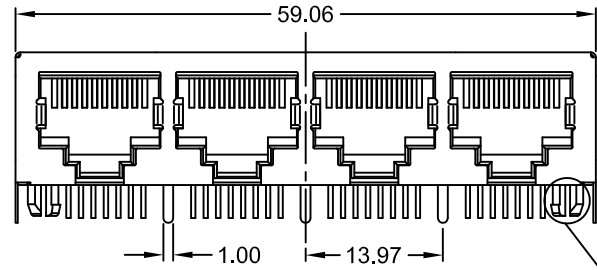


REV.	DESCRIPTION	DATE	DRAWN
A	NEW	02.12.2013	Ryan Chou



Recommended PCB Hole Layout  
Top View  
(Tolerance: ±0.05)

PART NUMBER	GOLD PLATING CONTACT AREA
MJS-408-D0L0-95/1CS	3μ"
MJS-408-D0L0-96/1CS	6μ"
MJS-408-D0L0-97/1CS	15μ"
MJS-408-D0L0-98/1CS	30μ"
MJS-408-D0L0-9H/1CS	50μ"

### Specifications

Current rating: 1.5A  
 Insulation resistance: 500MΩ min.  
 Withstanding voltage: 1000V rms 60Hz / Minute  
 Contact resistance: 50mΩ max.  
 Operating temperature: -40°C to +105°C

### Materials

Contact: Phosphor Bronze (t=0.35mm)  
 Plating: Au in contact area; Sn in solder area  
 Insulator: P.B.T. UL 94V-0 (Black)  
 Cavity confirms to FCC Rules and Registration PAR68, Subparts F



UNIT	GENERAL TOLERANCE	DRAWN	DATE	DWG. NO.	SHEET 1/1
mm	X.° ± X. ±	Ryan Chou	02.12.2013	2331602	REV. A
SCALE	.X° ± .X ± 0.35	CHECK	02.12.2013	SERIES NO.	
Free	.XX° ± .XX ± 0.25	APPROVE	02.12.2013	MJS-408-D0L0-9x/1CS	
	.XXX° ± .XXX ± 0.15	Hogi			

**Multi Port RJ 50 4 x <10P8C>**  
 THT side entry **"TAB DOWN"**  
 Long profile Type with shielded