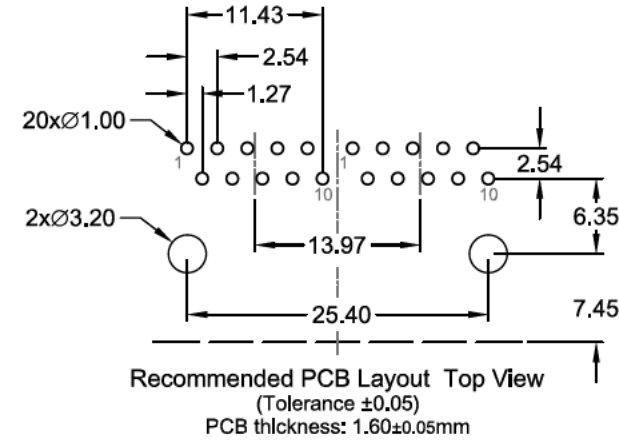
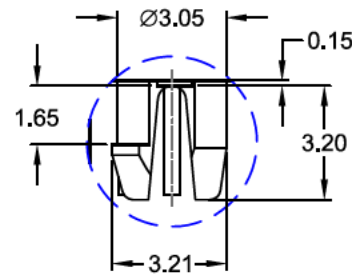
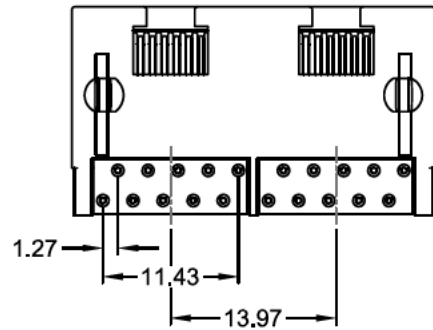
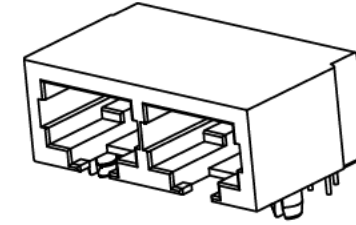
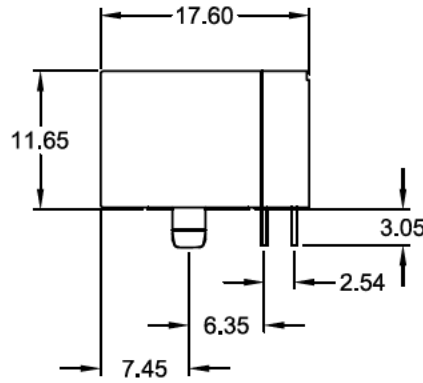
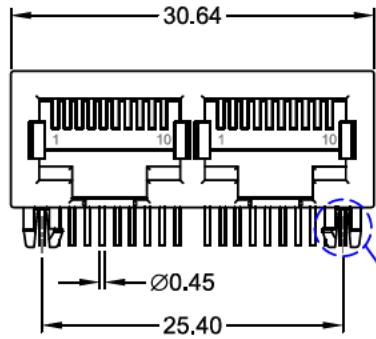


REV.	DESCRIPTION	DATE	DRAWN
A	New	23.06.2015	Ryan
B	updated plating "56">"66".. & locating pegs	29.03.2022	Cherry



Detail X

PART NUMBER	GOLD PLATING CONTACT AREA
MJS-200-D0S0-55	flash
MJS-200-D0S0-66	6µ"
MJS-200-D0S0-77	15µ"
MJS-200-D0S0-88	30µ"
MJS-200-D0S0-HH	50µ"



**Material**  
Contact: Copper Alloy  
Plating: Au on solder, Au on contact area entire contact Ni underplated  
Insulator: PBT (black) UL 94V-0  
Operating temperature: -40°C to +85°C  
Cavity comply with FCC Rules and Regulations Part 68, Subpart F

**Specifications**

**Electrical**  
Current rating: 1.5A  
Insulation resistance: 500MΩ min.  
Contact resistance: 30mΩ max.  
Withstanding voltage: 1000V AC/Minute

E-tec 2022 © - all rights reserved



UNIT	SCALE	GENERAL TOLERANCE	DRAWN	DATE	DWG. NO.	SHEET 1/1
mm	Free	X.° ±	Ryan	23.06.2015	2311604	REV. B
		.X° ±	Ronny	29.03.2022		
		.XX° ±	Fagl	29.03.2022	SERIES NO.	
		.XXX° ±			MJS-200-D0S0-xx	

**Multi Port RJ50 PCB Jack**  
2x <10P10C> Side by Side - "Tab Down"  
Slide Entry - Short Profile - without LED  
NON shielded