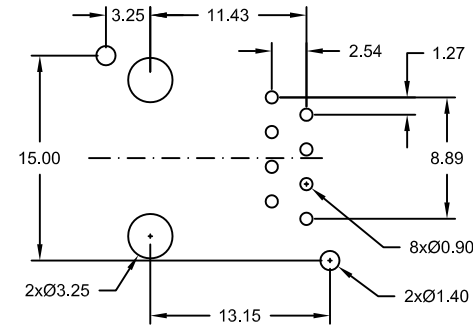
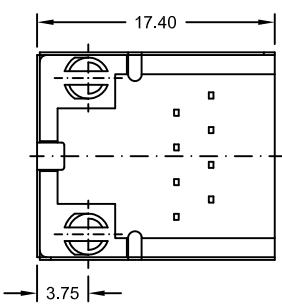
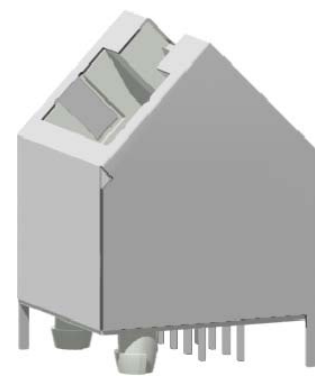
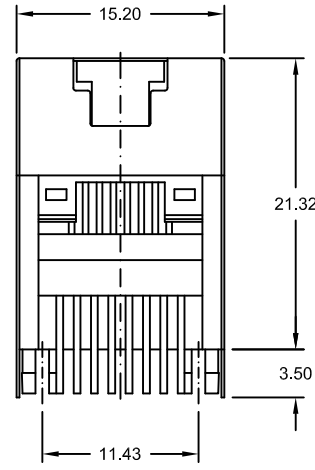
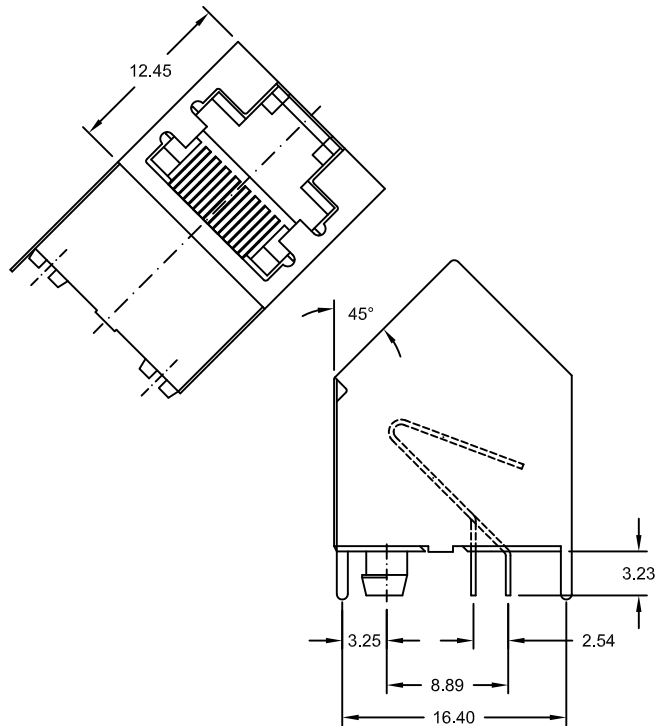


REV.	LOCAS.	DESCRIPTION	DATE	DRAWN
A		New	07.06.2011	Ronny
B		New DWG. No.	01.02.2012	Ronny



Recommended PCB Layout
top view

Specifications

- Material:
 - Housing: PBT UL 94V-0
 - Contact: Phosphor Bronze $t = 0.35\text{mm}$
plating: Sn over Ni on solder area
Au over Ni on contact area
 - Shield: Brass; Ni plated
- Electrical:
 - Current rating: 1.5A max. @ 25°C
 - Voltage rating: 150V AC max.
 - Contact resistance: 15mΩ max.
 - Withstanding voltage: 1000V rms 1 Minute 60Hz
 - Insulation resistance: 500MΩ min.
- Environmental:
 - Operating temperature: -20°C to +85°C
- Cavity conforms to FCC rules and registration PAR68, subparts F.

PART NUMBER	GOLD PLATING CONTACT AREA
MJR-188-S1H0-96/SS	6μ"
MJR-188-S1H0-97/SS	15μ"
MJR-188-S1H0-98/SS	30μ"
MJR-188-S1H0-9H/SS	50μ"



UNIT	SCALE	GENERAL TOLERANCE	DRAWN	DATE	DWG. NO.	SHEET 1/1
mm	Free	X.° ± X ± 0.50	Ronny	07.06.2011	1131500	REV. B
		.X° ± .X ± 0.38	Ronny	01.02.2012	SERIES NO.	
		.XX° ± .XX ± 0.25	Hogi	01.02.2012	MJR-188-S1H0-9x/XX	
		ANG. ± 1° .XXX ± 0.10				

45° PCB JACK
RJ45 <8P/8C>
semi shielded