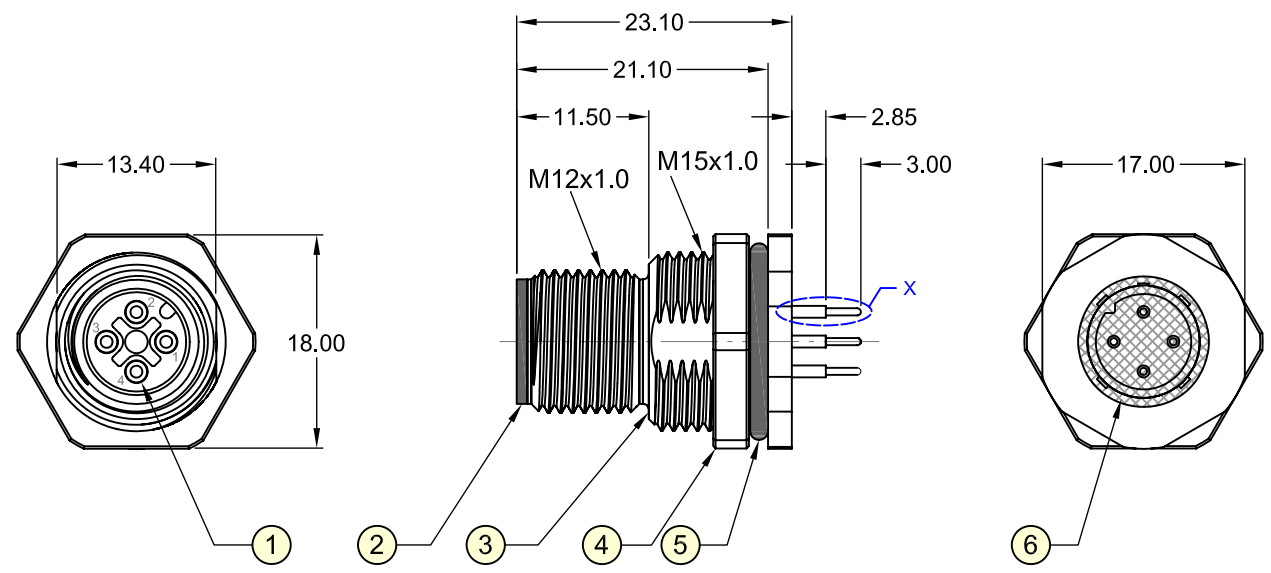
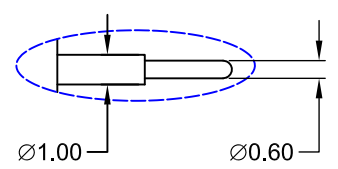


REV.	DESCRIPTION	DATE	DRAWN
A	New	26.12.2016	Cherry
B	General update	04.07.2019	Cheng
C	Torque 9~10kgf-cm -> 14~15kgf-cm	13.11.2020	Cherry



Detail X



Order Code
M12-MA04-TVFP-55/00

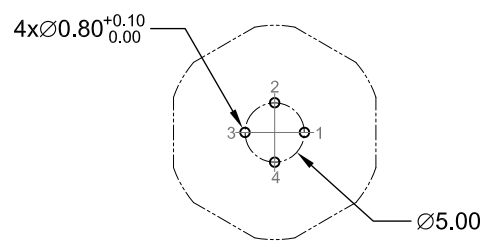


Specifications

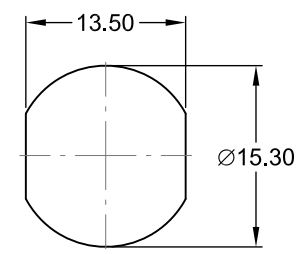
Electrical
 Current rating: 4A per contact
 Insulation resistance: 100MΩ min.
 Voltage rating: 250V AC/DC
 Withstanding voltage: 1400V AC

Mechanical Requirements
 Waterproof rate: IP68
 Recommended panel thickness: 0.8 to 5.0mm
 Recommended torque: 14~15 kgf-cm
 Operating life: 100 cycles min.

Operating temperature: -40°C to +85°C
 In accordance with IEC 61076-2-101:2012



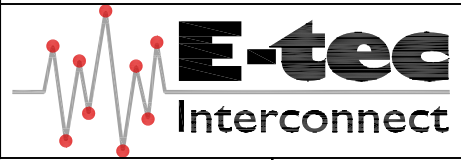
Recommended PCB Layout Top View



Recommended Panel Cut-out (Tolerance ±0.05)

Item	Part Name	Materials / Finish(Color)	Q'TY
1	Contact	Copper Alloy / Au Plated	4
2	Housing	Thermoplastic / Black	1
3	Metal Body	Copper Alloy / Ni Plated	1
4	Hex Nut	Copper Alloy / Ni Plated	1
5	O-Ring	NBR / Black	1
6	Glue	Epoxy / Black	-

E-tec 2020 © - all rights reserved



UNIT mm	GENERAL TOLERANCE		DRAWN Cherry	DATE 26.12.2016	DWG. NO. M12-MA04-TVFP-55/00	SHEET 1/1
SCALE Free	.X° ±	.X ±	CHECK Cheng	DATE 13.11.2020	SERIES NO. M12-MA04-TVFP-55/00	REV. C
	.XX° ±	.XX ± 0.50	APPROVE Fagi	DATE 13.11.2020		
	.XXX° ±	.XXX ±				

M12 Circular Connector
4-Pin Male - A-Coding Type
 THT - Panel Front Mount