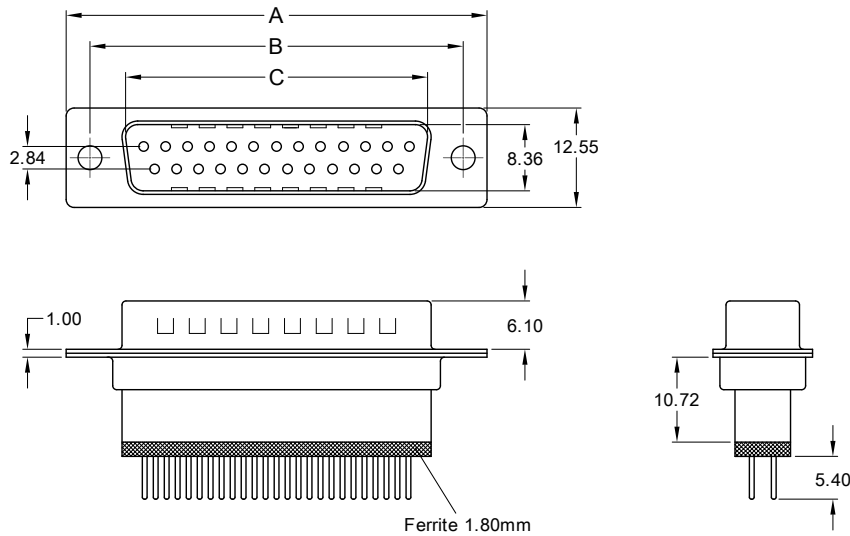


male



Ordering Code

SDM - xxx - B111 - 95 / F XXX

No. of contacts

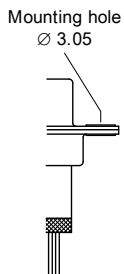
Option

Plating: -95 = tin(/leadfree)/gold

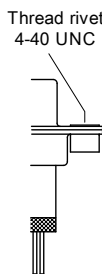
General Specification page 72

No. of contacts	Dimension		
	A	B	C
009	30.81	24.99	16.33
	1.213	.984	.643
015	39.20	33.30	25.25
	1.543	1.311	.994
025	53.05	47.04	38.96
	2.089	1.852	1.534
037	69.40	63.50	55.42
	2.732	2.500	2.182

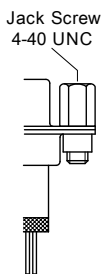
Options



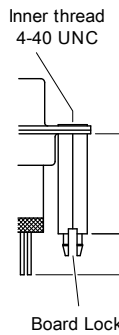
T0



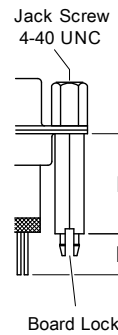
T



TJ



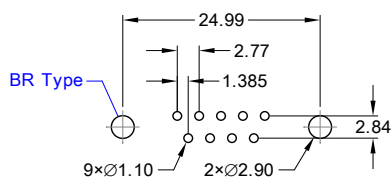
BR



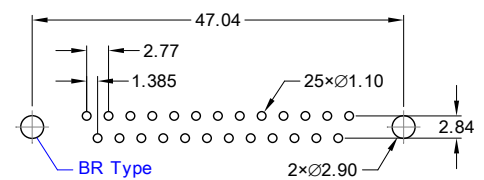
BRJ

D	E	Option
3.40	12.70	3
3.40	14.50	4

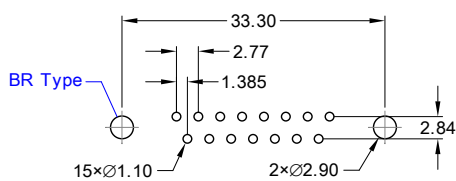
PCB Layout „male“



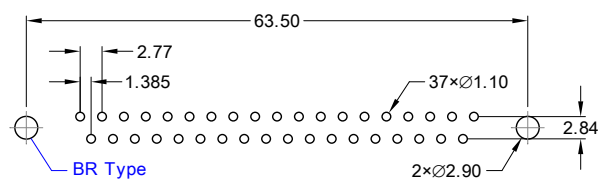
9 pin



25 pin



15 pin



37 pin