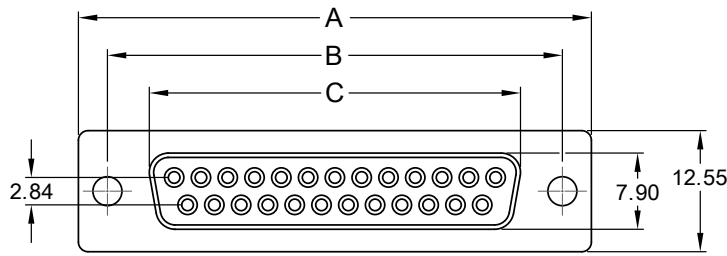
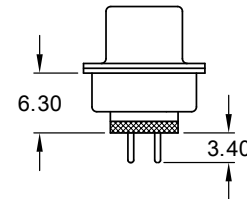
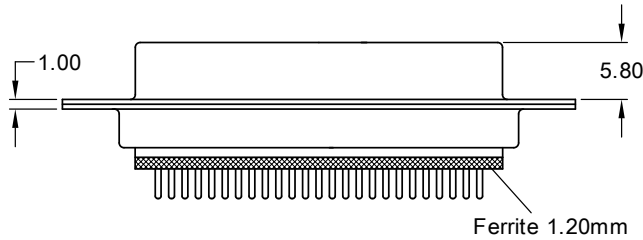


female



FERRITE SPECIFICATION

No. of Contacts	Measured Value (Ω)	Test Frequency
009	20 min. 40 min.	25 MHz 100 MHz
015	15 min. 35 min.	25 MHz 100 MHz
025	15 min. 40 min.	25 MHz 100 MHz



Ordering Code

SDF - xxx - S111 - 95 / F XXX

No. of contacts

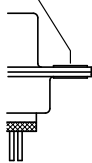
Option

Plating: -95= tin(leadfree)/gold  
General Specification page 72

No. of contacts	Dimension		
	A	B	C
009	30.81 1.213	24.99 .984	16.33 .643
015	39.20 1.543	33.30 1.311	24.66 .971
025	53.05 2.089	47.04 1.852	38.38 1.511

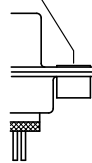
Options

Mounting Hole  
Ø 3.05



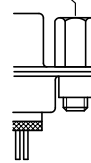
T0

Thread Rivet  
4-40 UNC



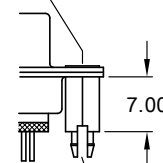
T

Jack Screw  
4-40 UNC



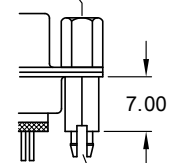
TJ

Inner Thread  
4-40 UNC



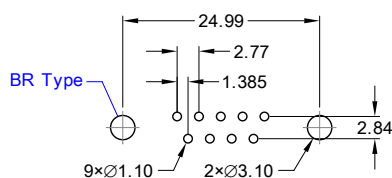
BR

Jack Screw  
4-40 UNC

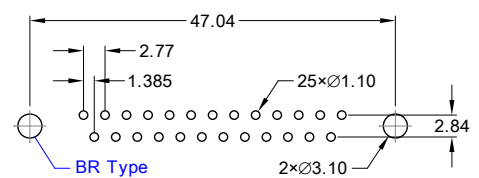


BRJ

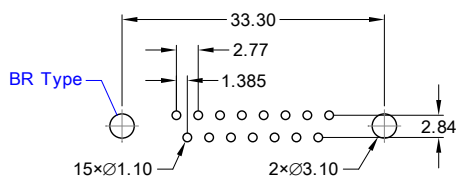
PCB Layout „female“



9 pin



25 pin



15 pin