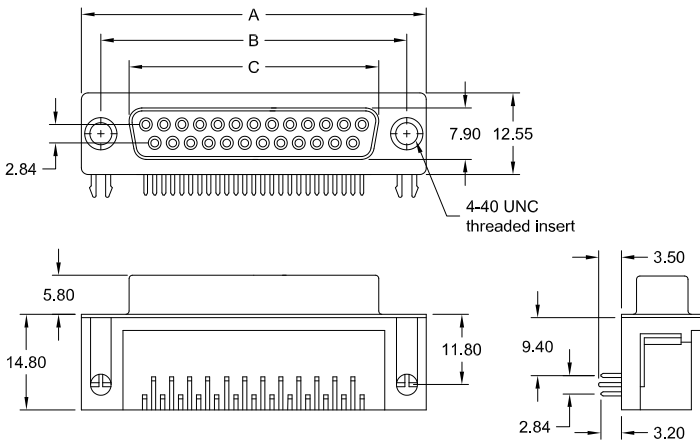


SD Series - D-Sub 90°
9,40mm / .370" „Euro Style“ Footprint



female



PCB hole layout on page 29

No. of contacts	Dimension		
	A	B	C
009	30.81	24.99	16.33
	1.213	.984	.643
015	39.14	33.32	24.66
	1.541	1.312	.971
025	53.04	47.04	38.38
	2.088	1.852	1.511
037	69.32	63.50	54.84
	2.729	2.500	2.159

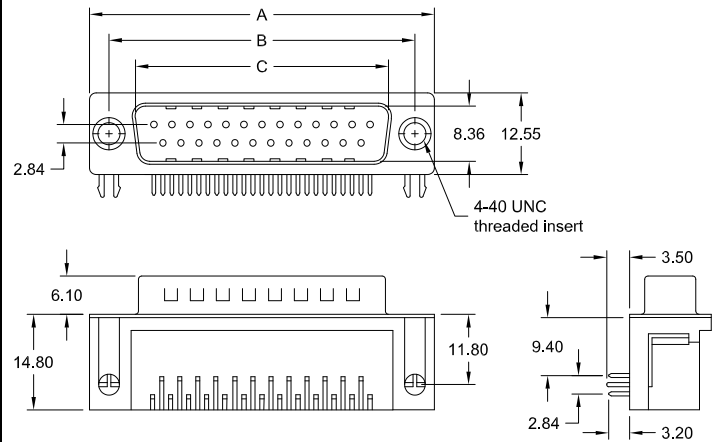
Ordering Code

SDF - xxx - M900 - 55 / XX
 No. of contacts Option

Plating: -55 = gold

General Specification page 72

male



PCB hole layout on page 29

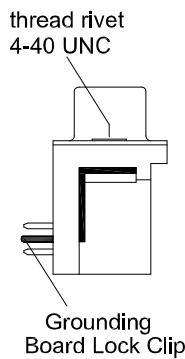
No. of contacts	Dimension		
	A	B	C
009	30.81	24.99	16.92
	1.213	.984	.666
015	39.14	33.32	25.25
	1.541	1.312	.994
025	53.04	47.04	38.96
	2.088	1.852	1.534
037	69.32	63.50	55.42
	2.729	2.500	2.182

Ordering Code

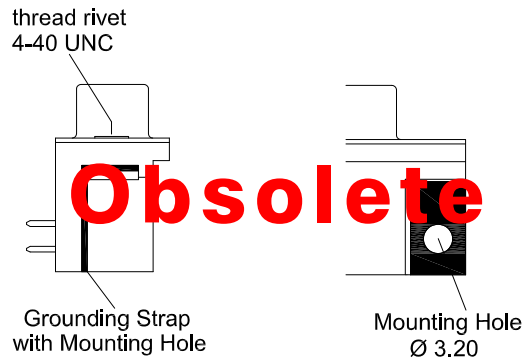
SDM - xxx - M900 - 55 / XX
 No. of contacts Option

Plating: -55 = gold

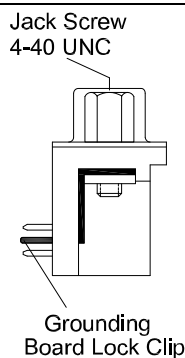
Options



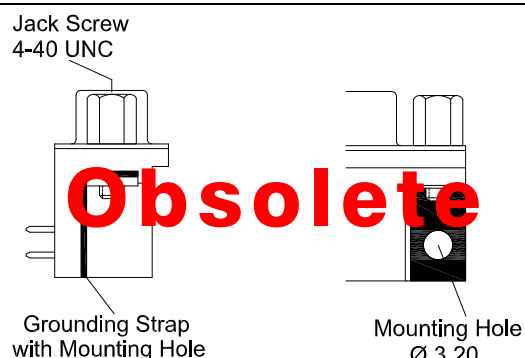
N



H

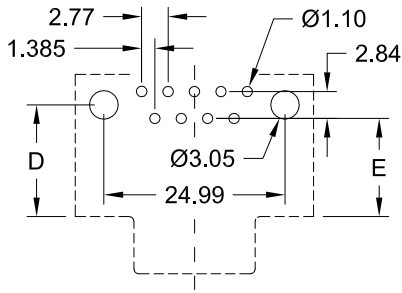


NJ

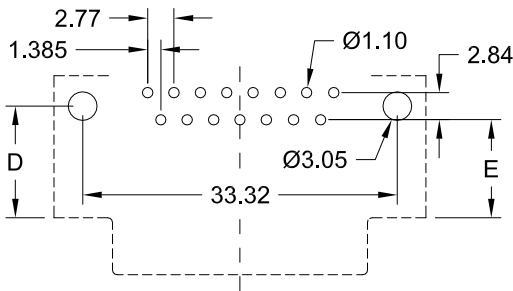


HJ

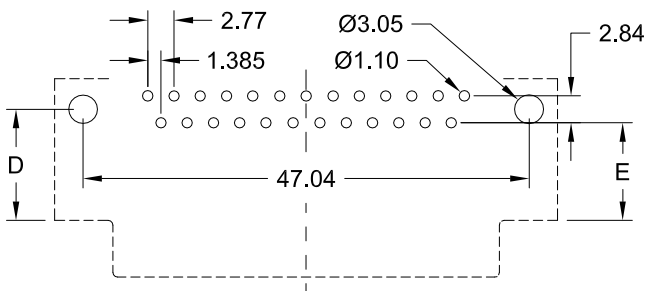
N900 & M900 Type



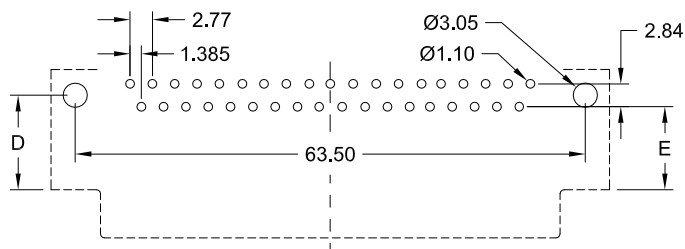
9-pin



15-pin

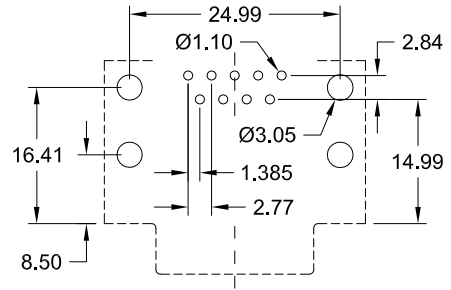


25-pin

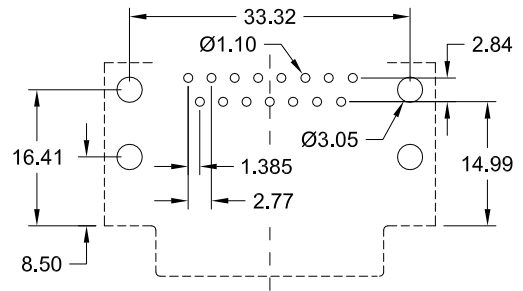


37-pin

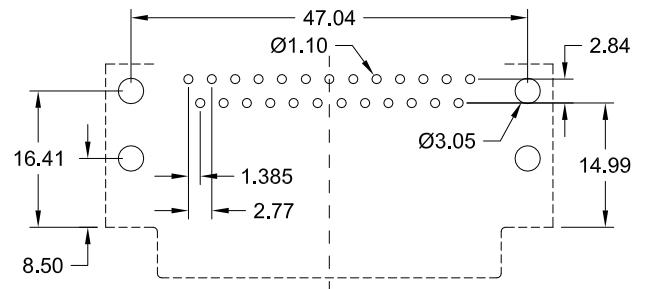
L900 Type



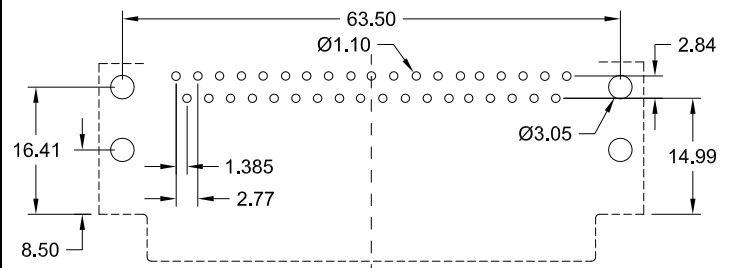
9-pin



15-pin



25-pin



37-pin

D-Sub Type	Dim. "D" ±0.25/±.010	Dim. "E" ±0.25/±.010
N 900	<u>9.50</u> .374	<u>8.08</u> .318
M 900	<u>11.70</u> .461	<u>10.30</u> .406