

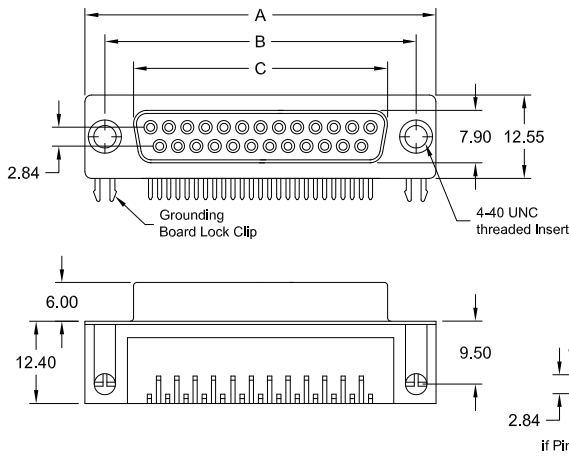
# SD Series - D-Sub 90°

"Wave Solder" & "Pin-In-Paste" Technology

N900 8,08mm / .318" „US Style“ Footprint

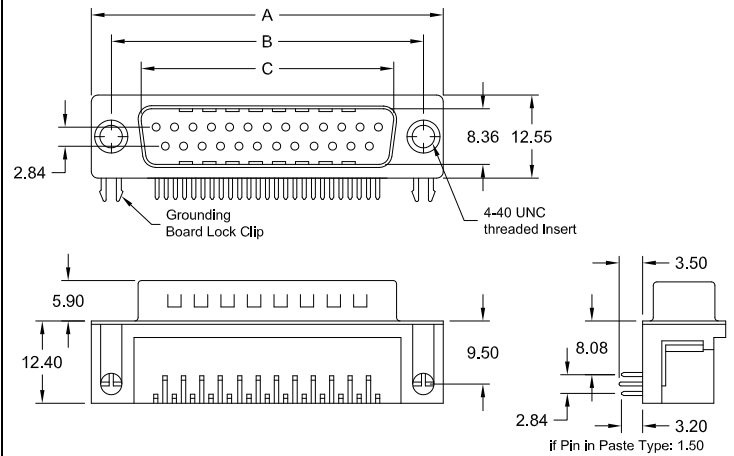


## female



PCB hole layout on page 29

## male



PCB hole layout on page 29

No. of contacts	Dimension			Ordering Code
	A	B	C	
009	30.81 1.213	24.99 .984	16.33 .643	<b>SDF-009-N900-95/ XX</b>
015	39.20 1.543	33.32 1.311	24.66 .971	<b>SDF-015-N900-95/ XX</b>
				<b>SDF-015-N900-95/Y XX</b>
025	53.05 2.089	47.04 1.852	38.38 1.511	<b>SDF-025-N900-95/ XX</b>
				<b>SDF-025-N900-95/B XX</b>
037	69.40 2.732	63.50 2.500	54.84 2.159	<b>SDF-037-N900-95/ XX</b>

Plating: **-95** = tin(*leadfree*)/gold  
**-55** = gold/gold *on request*      Option

No. of contacts	Dimension			Ordering Code
	A	B	C	
009	30.81 1.213	24.99 .984	16.92 .666	<b>SDM-009-N900-95/ XX</b>
				<b>SDM-009-N900-95/T XX</b>
015	39.20 1.543	33.32 1.311	25.25 .994	<b>SDM-015-N900-95/ XX</b>
025	53.05 2.089	47.04 1.852	38.96 1.534	<b>SDM-025-N900-95/ XX</b>
037	69.40 2.732	63.50 2.500	55.42 2.182	<b>SDM-037-N900-95/ XX</b>

Plating: **-95** = tin(*leadfree*)/gold  
**-55** = gold/gold *on request*      Option

**SDF - xxx- N900 - 95/Y XX** = PC99 type yellowish brown  
**SDF - xxx- N900 - 95/B XX** = PC99 type burgundy

*Other colour available on request*

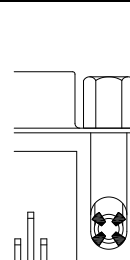
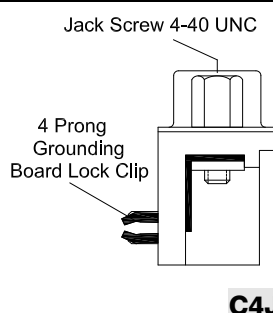
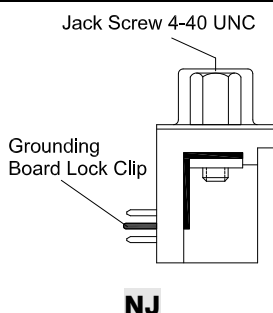
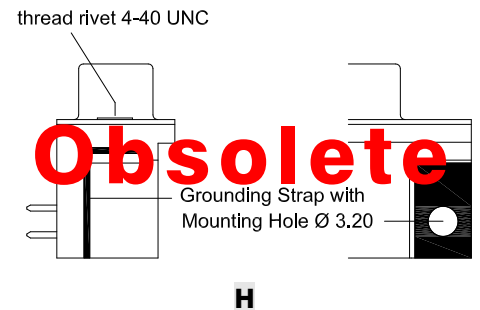
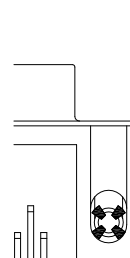
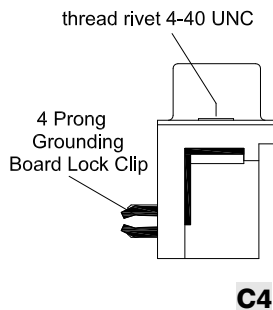
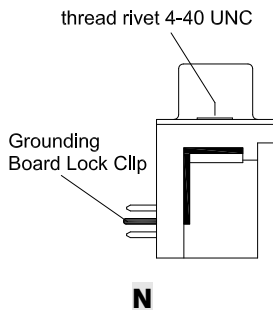
**SDM - xxx- N900 - 95/T XX** = PC99 type teal

*Other colour available on request*

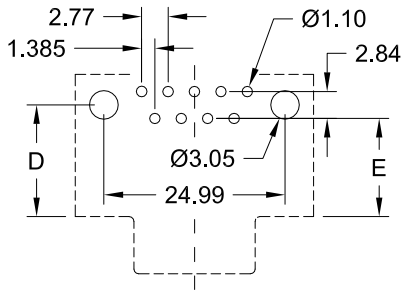
"Pin-In-Paste" Technology - for availability pls. contact [info@e-tec.com](mailto:info@e-tec.com)

General Specification page 72

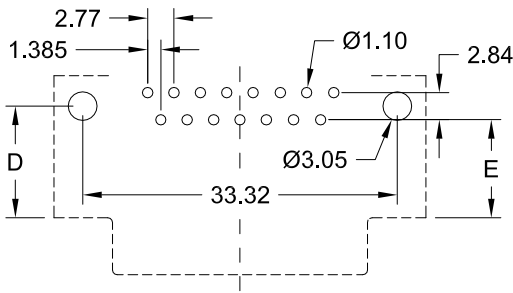
## Options



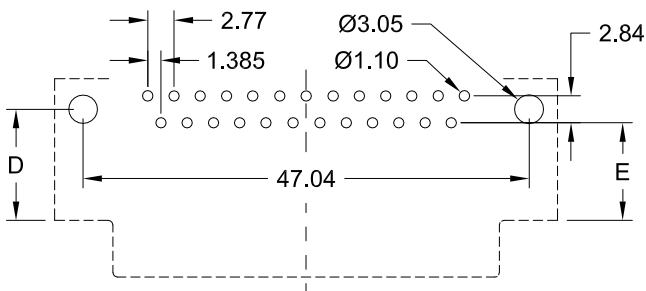
**N900 & M900 Type**



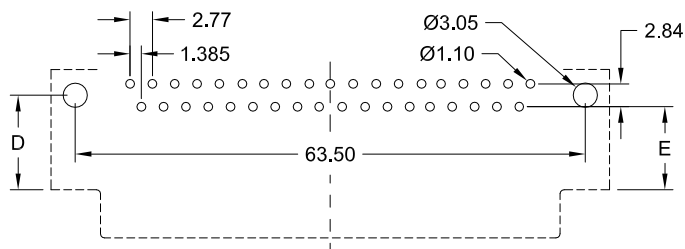
9-pin



15-pin

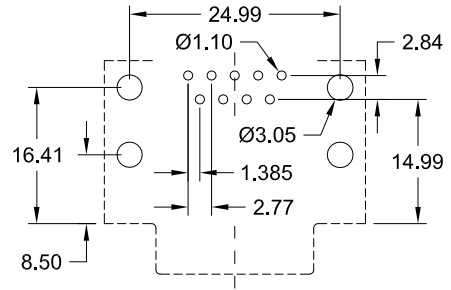


25-pin

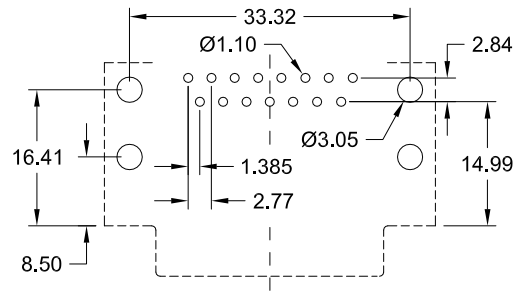


37-pin

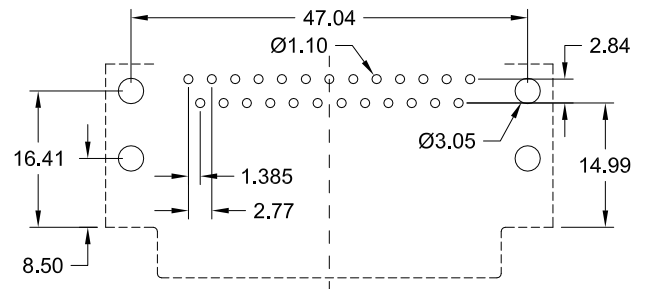
**L900 Type**



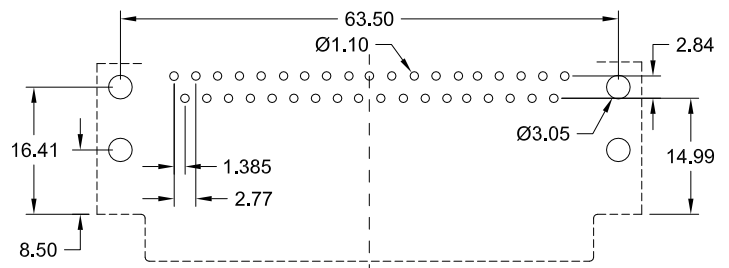
9-pin



15-pin



25-pin



37-pin

D-Sub Type	Dim. "D" ±0.25/±.010	Dim. "E" ±0.25/±.010
<b>N 900</b>	<u>9.50</u> .374	<u>8.08</u> .318
<b>M 900</b>	<u>11.70</u> .461	<u>10.30</u> .406