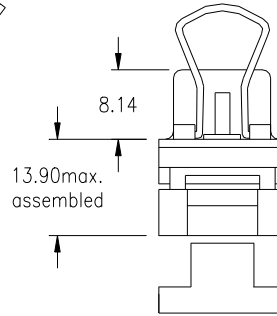
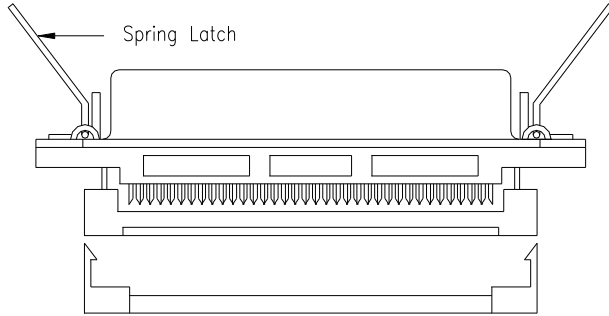
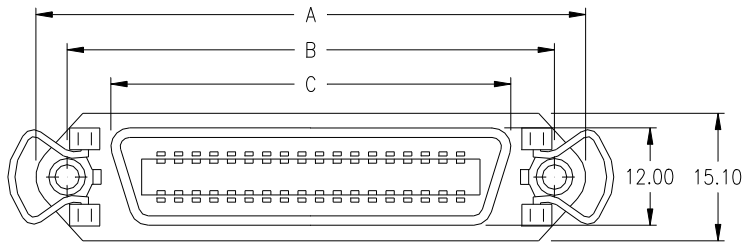
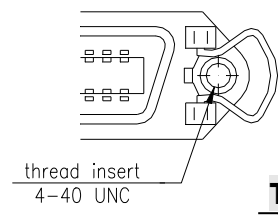
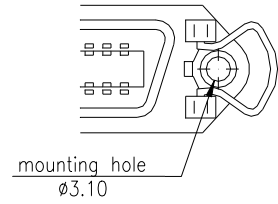


female - spring latch type -



Option:



T0

T

| No. of contacts | Dimension | | |
|-----------------|-----------|-------|-------|
| | A | B | C |
| 036 | 67.80 | 59.74 | 48.90 |
| | 2.669 | 2.352 | 1.925 |
| 050 | 82.80 | 74.85 | 64.00 |
| | 3.259 | 2.946 | 2.520 |

Plating: -95 = tin(leadfree)/gold

General Specification:
Centronics - page D

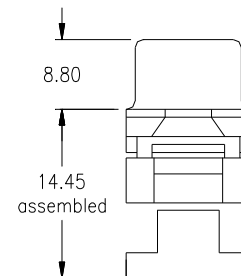
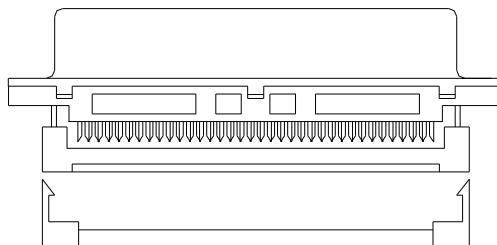
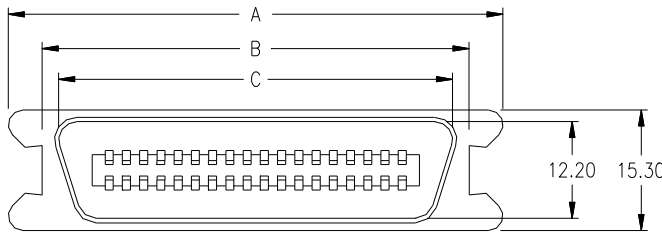
Ordering Code

CCF - xxx - S201 - 95 / XX

No. of contacts

Option

male - bail lock type -



| No. of contacts | Dimension | | |
|-----------------|-----------|-------|-------|
| | A | B | C |
| 036 | 67.69 | 59.74 | 49.35 |
| | 2.665 | 2.352 | 1.943 |
| 050 | 82.78 | 74.85 | 64.47 |
| | 3.259 | 2.946 | 2.538 |

Plating: -95 = tin(leadfree)/gold

General Specification:
Centronics - page D

Ordering Code

CCM - xxx - S201 - 95

No. of contacts