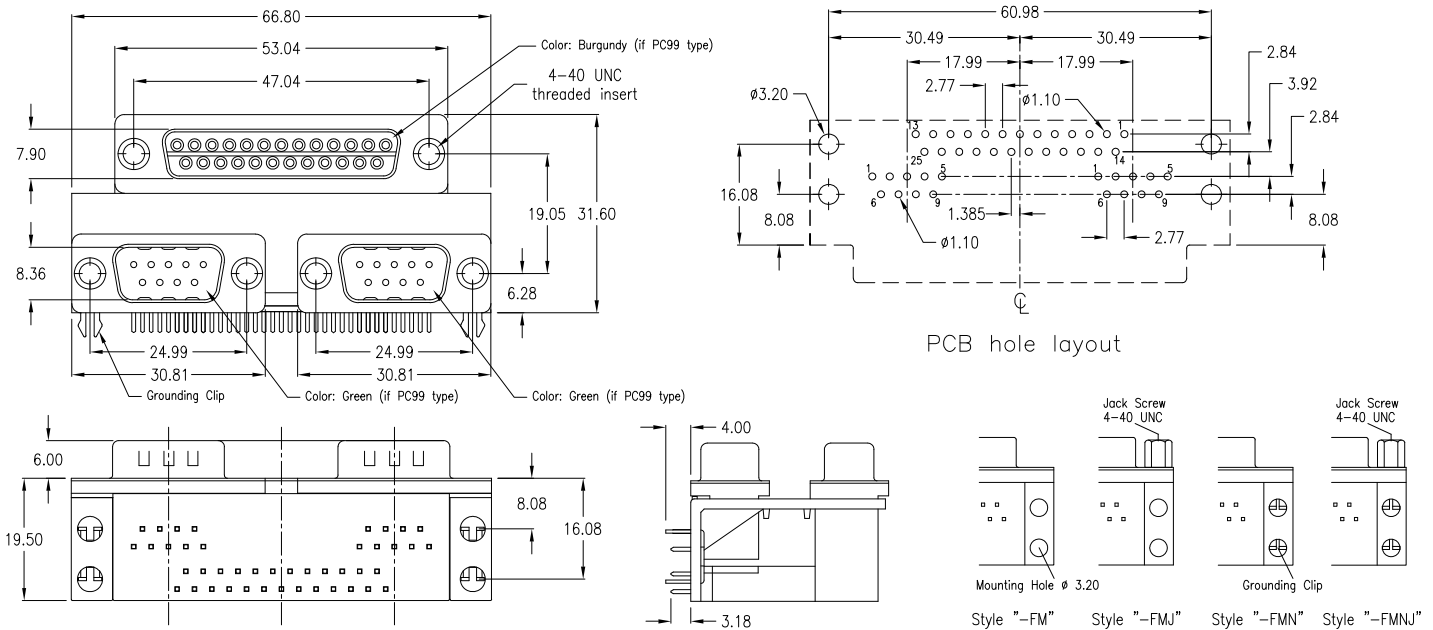
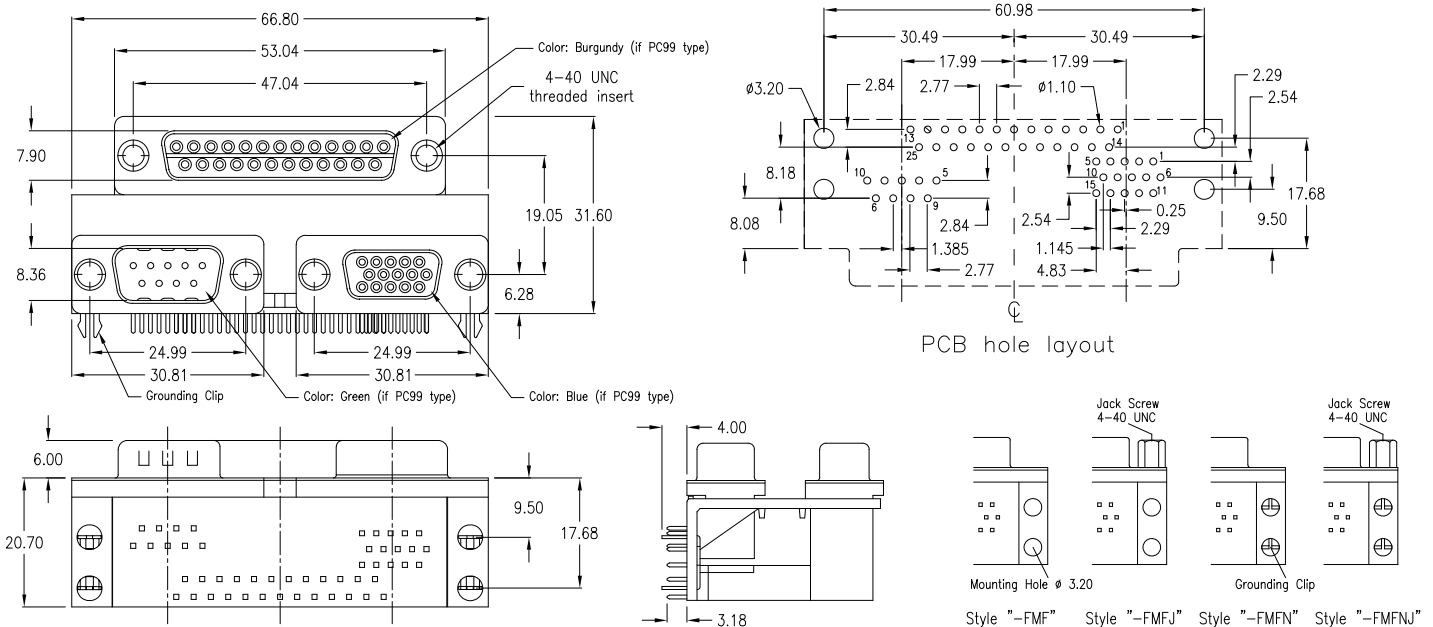


25-pin female / 9-pin male / 9-pin male



Version	without grounding clips, just 4 mounting holes	without grounding clips, just 4 mounting holes; 6 jack screws 4-40 UNC mounted	with 4 grounding clips (as above drawing)	with 4 grounding clips; 6 jack screws 4-40 UNC mounted
Standard: black color Insulator	SDD-2599-2-95-FMM	SDD-2599-2-95-FMMJ	SDD-2599-2-95-FMMN	SDD-2599-2-95-FMMNJ
meets PC99 spec	SDP-2599-2-95-FMM	SDP-2599-2-95-FMMJ	SDP-2599-2-95-FMMN	SDP-2599-2-95-FMMNJ

25-pin female / 9-pin male / 15-pin HD female



Version	without grounding clips just 4 mounting holes	without grounding clips, just 4 mounting holes; 6 jack screws 4-40 UNC mounted	with 4 grounding clips (as above drawing)	with 4 grounding clips; 6 jack screws 4-40 UNC mounted
Standard: black color Insulator	SDD-259H15-4-95-FMF	SDD-259H15-4-95-FMFJ	SDD-259H15-4-95-FMFN	SDD-259H15-4-95-FMFNJ
meets PC99 spec.	SDP-259H15-4-95-FMF	SDP-259H15-4-95-FMFJ	SDP-259H15-4-95-FMFN	SDP-259H15-4-95-FMFNJ