

Ordering Code

Special product.

Please ask for availability and minimum order quantity before you consider the article for development, design in or production purposes.

SDM - xxx - T 970 - 55/ Xxxx

No. of contacts

Option

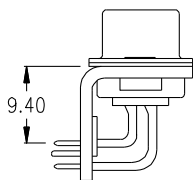
No. of contacts	Dimension				
	A	B	C	D if "F"=2,54	D if "F"=2,84
009	30.81 1.213	24.99 .984	16.92 .666	10.07 .396	10.02 .394
015	39.14 1.541	33.32 1.312	25.25 .994	10.07 .396	10.02 .394
025	53.04 2.088	47.04 1.852	38.96 1.534	10.07 .396	10.02 .394
037	69.32 2.729	69.32 2.729	63.50 2.500	55.42 2.182	10.07 .396

Plating: -55 = gold/gold

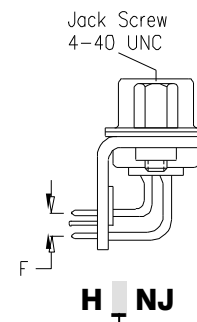
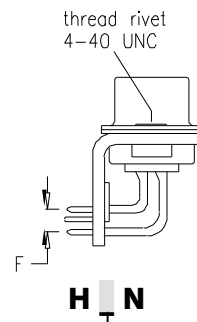
(-95 = tin(leadfree)/gold on request)

General Specification page 72

(Dimension "E")

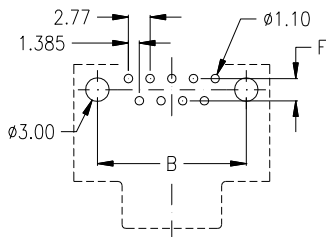


Options

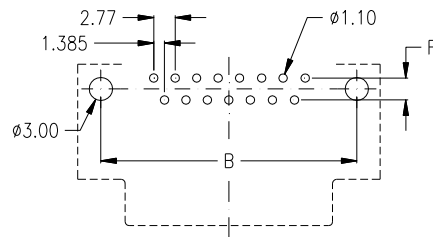


Dimension "F"	Option
2,54mm	1
2,84mm	2

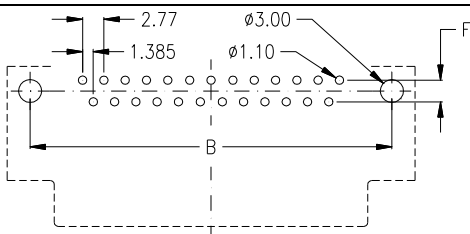
PCB Layout „male“



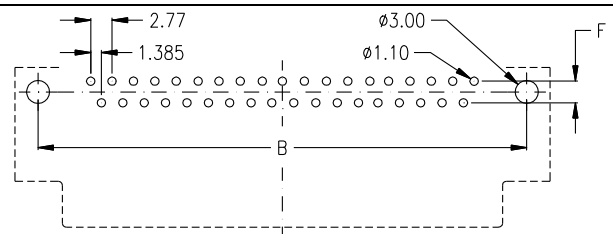
9 pin



15 pin



25 pin



37 pin