

Ordering Code

SDM - xxx - N 901 - 55/ XxXX

No. of contacts

Option

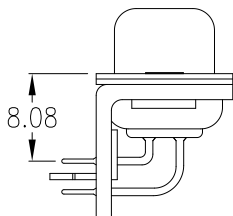
Precision contact

No. of contacts	Dimension		
	A	B	C
009	<u>30.81</u> 1.213	<u>24.99</u> .984	<u>16.92</u> .666
015	<u>39.14</u> 1.541	<u>33.32</u> 1.312	<u>25.25</u> .994
025	<u>53.04</u> 2.088	<u>47.04</u> 1.852	<u>38.96</u> 1.534
037	<u>69.32</u> 2.729	<u>63.50</u> 2.500	<u>55.42</u> 2.182

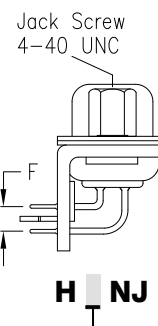
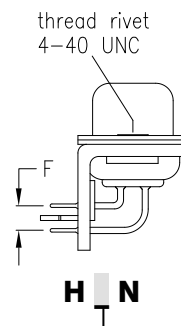
Plating: -55 = Plating gold all over

General Specification page 72

Dimension "E"

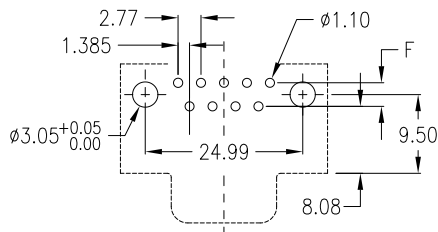


Options

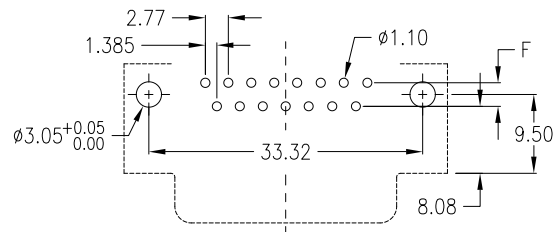


Dimension "F"	Option
2,54mm	1
2,84mm	2

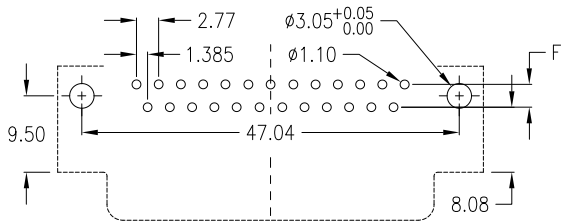
PCB Layout „male“



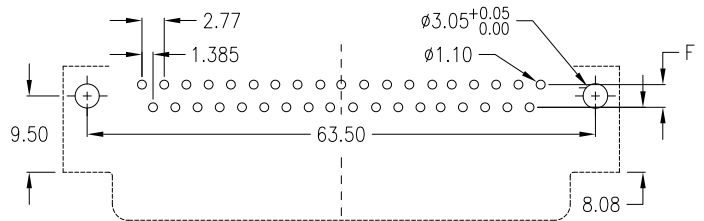
9 pin



15 pin



25 pin



37 pin