

**Ordering Code**

**Special product.**

Please ask for availability and minimum order quantity before you consider the article for development, design in or production purposes.

**SDM - xxx - N 900 - 95/ XxXX**

No. of contacts

Option

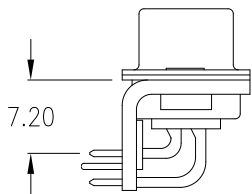
**Stamped contact**

Plating: -95 = tin(leadfree)/gold

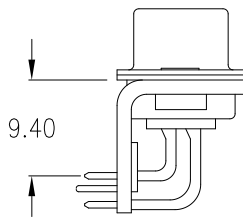
General Specification page 72

No. of contacts	Dimension				
	A	B	C	D if "F"=2,54	D if "F"=2,84
<b>009</b>	30.81 1.213	24.99 .984	16.92 .666	8.47 .333	8.47 .333
<b>015</b>	39.14 1.541	33.32 1.312	25.25 .994	8.47 .333	8.47 .333
<b>025</b>	53.04 2.088	47.04 1.852	38.96 1.534	10.67 .420	10.67 .420
<b>037</b>	69.32 2.729	63.50 2.500	55.42 2.182	10.67 .420	10.67 .420

Dimension "E"

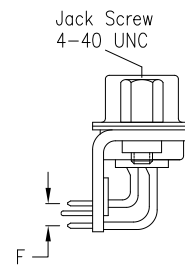
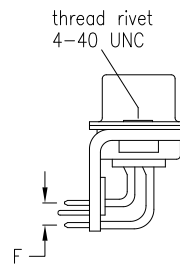


if 9 pin & 15-pin



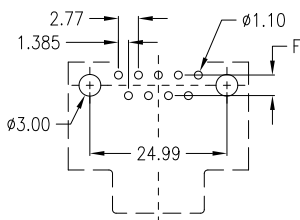
if 25 pin & 37 pin

**Options**

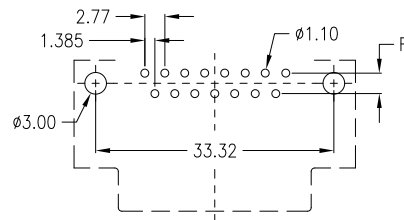


Dimension "F"	Option
2,54mm	<b>1</b>
2,84mm	<b>2</b>

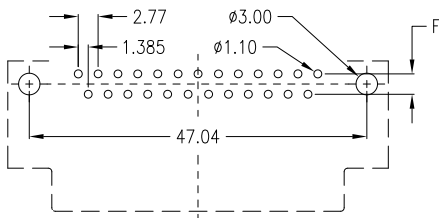
**PCB Layout „male“**



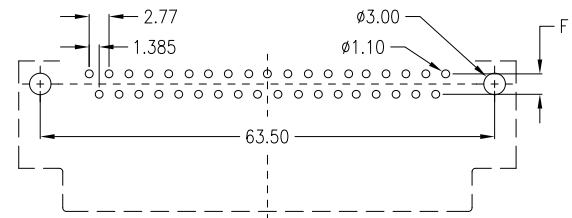
9 pin



15 pin



25 pin



37 pin