

**Ordering Code**

**SDM - xxx - B111 - 95 / XXX**

No. of contacts

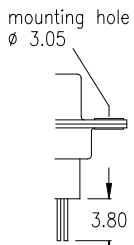
Option

Plating: -95 = tin(leadfree)/gold

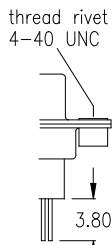
General Specification page 72

No. of contacts	Dimension		
	A	B	C
<b>009</b>	<u>30.81</u> 1.213	<u>24.99</u> .984	<u>16.92</u> .666
<b>015</b>	<u>39.14</u> 1.541	<u>33.32</u> 1.312	<u>25.25</u> .994
<b>025</b>	<u>53.04</u> 2.088	<u>47.04</u> 1.852	<u>38.96</u> 1.534
<b>037</b>	<u>69.32</u> 2.729	<u>63.50</u> 2.500	<u>55.42</u> 2.182

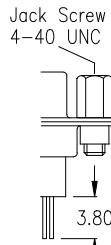
**Options**



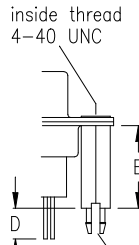
**T0**



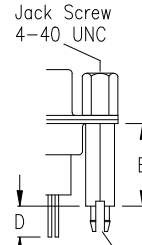
**T**



**TJ**



**BR**

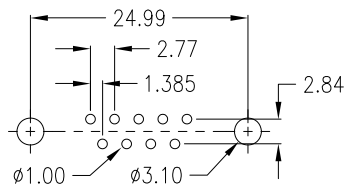


**BR\_J**

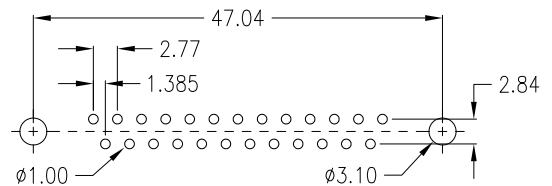
D ±0.20	E	Option
3,20	12,70	<b>1</b>
3,50	11,00	<b>2</b>
3,20	14,50	<b>4</b>
4,20	13,50	<b>5</b>

**PCB Layout „male“**

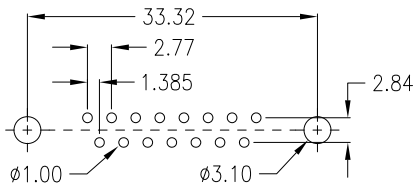
9 pin



25 pin



15 pin



37 pin

